

For Research Use Only

CoraLite® Plus 488-conjugated ACAT1 Polyclonal antibody



Catalog Number: CL488-16215

Featured Product

Basic Information

Catalog Number: CL488-16215	GenBank Accession Number: BC010942	Purification Method: Antigen affinity purification
Size: 100ul , Concentration: 1000 µg/ml by Nanodrop;	GeneID (NCBI): 38	Recommended Dilutions: IF 1:50-1:500
Source: Rabbit	Full Name: acetyl-Coenzyme A acetyltransferase 1	Excitation/Emission maxima wavelengths: 493 nm / 522 nm
Isotype: IgG	Calculated MW: 45 kDa	
Immunogen Catalog Number: AG9215	Observed MW: 38-45 kDa	

Applications

Tested Applications: FC (Intra), IF	Positive Controls: IF : HeLa cells,
Species Specificity: human, mouse, rat	

Background Information

ACAT1 (acetyl-CoA acetyltransferase), is a mitochondrial enzyme catalyzing the reversible formation or breakdown of acetoacetyl-CoA and plays important roles in ketogenesis and ketolysis. Deficiency of ACAT1 causes an inherited metabolic disorder. Recently ACAT1 has been reported to get involved in cancer progression.

Storage

Storage:
Store at -20°C. Avoid exposure to light. Stable for one year after shipment.
Storage Buffer:
PBS with 50% Glycerol, 0.05% Proclin300, 0.5% BSA, pH 7.3.
Aliquoting is unnecessary for -20°C storage

*** 20ul sizes contain 0.1% BSA

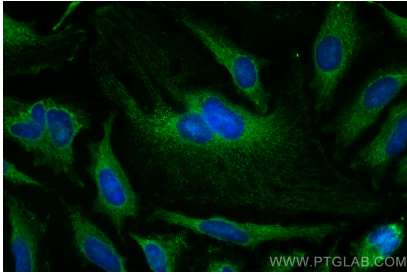
For technical support and original validation data for this product please contact:

T: 1 (888) 4PTGLAB (1-888-478-4522) (toll free
in USA), or 1(312) 455-8498 (outside USA)

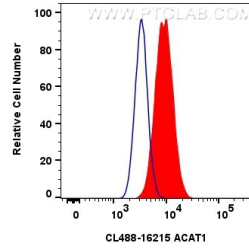
E: proteintech@ptglab.com
W: ptglab.com

This product is exclusively available under Proteintech Group brand and is not available to purchase from any other manufacturer.

Selected Validation Data



Immunofluorescent analysis of (-20°C Ethanol) fixed HeLa cells using CoraLite® Plus 488 ACAT1 antibody (CL488-16215) at dilution of 1:200.



1x10⁶ HeLa cells were intracellularly stained with 0.8 ug CoraLite® Plus 488 Anti-Human ACAT1 (CL488-16215) (red), or 0.8 ug CoraLite® Plus 488-conjugated Rabbit IgG control Rabbit PolyAb (CL488-30000, Clone:) (blue). Cells were fixed with 4% PFA and permeabilized with Flow Cytometry Perm Buffer (PF00011-C).