

For Research Use Only

CoraLite® Plus 488-conjugated CEP70 Polyclonal antibody

Catalog Number: CL488-16280



Basic Information

Catalog Number: CL488-16280	GenBank Accession Number: BC016050	Purification Method: Antigen affinity purification
Size: 100ul , Concentration: 1000 µg/ml by Nanodrop;	GeneID (NCBI): 80321	Recommended Dilutions: IF/ICC 1:50-1:500
Source: Rabbit	UNIPROT ID: Q8NHQ1	Excitation/Emission maxima wavelengths: 493 nm / 522 nm
Isotype: IgG	Full Name: centrosomal protein 70kDa	
Immunogen Catalog Number: AG9365	Calculated MW: 597 aa, 70 kDa	
	Observed MW: 25-28 kDa	

Applications

Tested Applications: IF/ICC	Positive Controls: IF/ICC : MCF-7 cells,
Species Specificity: human	

Background Information

CEP70, also named as Centrosomal protein of 70 kDa, is a 597 amino acid protein, which directly interacts with tubulin-gamma; this interaction determines centrosomal localization. CEP70 plays a role in the organization of both preexisting and nascent microtubules in interphase cells. During mitosis, CEP70 is required for the organization and orientation of the mitotic spindle. CEP70 exists some isoforms with MW 70, 67, 65 and 25 kDa.

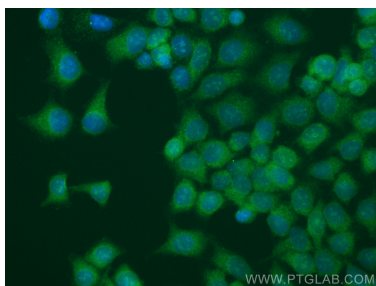
Storage

Storage:
Store at -20°C. Avoid exposure to light. Stable for one year after shipment.
Storage Buffer:
PBS with 50% Glycerol, 0.05% Proclin300, 0.5% BSA, pH 7.3.
Aliquoting is unnecessary for -20°C storage

For technical support and original validation data for this product please contact:
T: 1 (888) 4PTGLAB (1-888-478-4522) (toll free in USA), or 1(312) 455-8498 (outside USA)
E: proteintech@ptglab.com
W: ptglab.com

This product is exclusively available under Proteintech Group brand and is not available to purchase from any other manufacturer.

Selected Validation Data



Immunofluorescent analysis of (-20°C Methanol) fixed MCF-7 cells using CoraLite® Plus 488 CEP70 antibody (CL488-16280) at dilution of 1:200.