

CoraLite® Plus 488-conjugated NRF2, NFE2L2 Polyclonal antibody

Catalog Number: CL488-16396

Featured Product

Basic Information

Catalog Number: CL488-16396	GenBank Accession Number: BC011558	Purification Method: Antigen affinity purification
Size: 100ul , Concentration: 1000 µg/ml by Nanodrop;	GeneID (NCBI): 4780	Recommended Dilutions: IF 1:50-1:500
Source: Rabbit	Full Name: nuclear factor (erythroid-derived 2)-like 2	Excitation/Emission maxima wavelengths: 488 nm / 515 nm
Isotype: IgG	Calculated MW: 605 aa, 68 kDa	
Immunogen Catalog Number: AG9489	Observed MW: 110 kDa, 68 kDa	

Applications

Tested Applications: FC (Intra), IF	Positive Controls: IF : HepG2 cells,
Species Specificity: human, mouse, rat	

Background Information

NRF2, also named as NFE2L2, belongs to the bZIP family and CNC subfamily. It is a transcription activator that binds to antioxidant response (ARE) elements in the promoter regions of target genes. NRF2 is important for the coordinated up-regulation of genes in response to oxidative stress. It may be involved in the transcriptional activation of genes of the beta-globin cluster by mediating enhancer activity of hypersensitive site 2 of the beta-globin locus control region. Nrf2 is a key player in the regulation of genes encoding for many antioxidative response enzymes. The expression of NRF2 may be induced under oxidative stress (PMID:14567983). In lung cancer, Nrf2 activation in malignant cells has been associated with tumor progression and chemotherapy resistance (PMID:20534738). Identifying patients with abnormal NRF2 expression may be important for selection for chemotherapy in NSCLC. As new investigators break into the emerging field of Nrf2 research, confusion regarding the correct migratory pattern of Nrf2 is causing doubts about the accuracy and reproducibility of published results. This letter provides solid evidence that the actually observed molecular weight of Nrf2 is about 70kDa and 95-110 kDa. (PMID: 22703241).

Storage

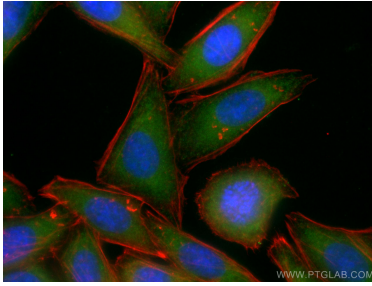
Storage:
Store at -20°C. Avoid exposure to light.
Storage Buffer:
PBS with 50% Glycerol, 0.05% Proclin300, 0.5% BSA, pH 7.3.
 Aliquoting is unnecessary for -20°C storage

*** 20ul sizes contain 0.1% BSA

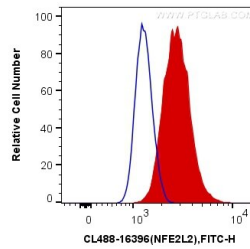
For technical support and original validation data for this product please contact:
 T: 1 (888) 4PTGLAB (1-888-478-4522) (toll free in USA), or 1(312) 455-8498 (outside USA)
 E: proteintech@ptglab.com
 W: ptglab.com

This product is exclusively available under Proteintech Group brand and is not available to purchase from any other manufacturer.

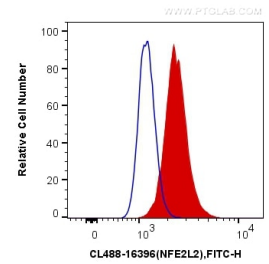
Selected Validation Data



Immunofluorescent analysis of (-20°C Methanol) fixed HepG2 cells using CoraLite® Plus 488 NRF2, NFE2L2 antibody (CL488-16396) at dilution of 1:100, CoraLite®594 Beta Actin antibody (CL594-66009, Clone: 2D4H5, red). DAPI (blue).



1X10⁶ MCF-7 cells were intracellularly stained with 0.4 ug CoraLite® Plus 488 Anti-Human NRF2, NFE2L2 (CL488-16396) (red), or 0.4 ug Control Antibody. Cells were fixed and permeabilized with Transcription Factor Staining Buffer Kit (PF00011).



1X10⁶ MCF-7 cells were intracellularly stained with 0.4 ug CoraLite® Plus 488 Anti-Human NRF2, NFE2L2 (CL488-16396) (red), or 0.4 ug Control Antibody. Cells were fixed and permeabilized with Transcription Factor Staining Buffer Kit (PF00011).