

For Research Use Only

# CoraLite® Plus 488-conjugated CHMP7 Polyclonal antibody

Catalog Number: CL488-16424

Featured Product



## Basic Information

### Catalog Number:

CL488-16424

### Size:

100ul , Concentration: 1000 ug/ml by  
Nanodrop;

### Source:

Rabbit

### Isotype:

IgG

### Immunogen Catalog Number:

AG9625

### GenBank Accession Number:

BC019110

### GeneID (NCBI):

91782

### UNIPROT ID:

Q8WUX9

### Full Name:

CHMP family, member 7

### Calculated MW:

453 aa, 51 kDa

### Observed MW:

51-55 kDa

### Purification Method:

Antigen affinity purification

### Recommended Dilutions:

IF/ICC 1:50-1:500

### Excitation/Emission maxima wavelengths:

493 nm / 522 nm

## Applications

### Tested Applications:

IF/ICC

### Species Specificity:

human

### Positive Controls:

IF/ICC : A431 cells,

## Background Information

CHMP7 (Charged multivesicular body protein 7), it is expected to be located in the nucleus and cytoplasm, which is ubiquitinated in lymph node and appendix. It is reported that Lem2p (LEM2), a member of the LEM (Lap2- Emerin- Man1) family of inner nuclear membrane proteins, and the ESCRT-II/ESCRT-III hybrid protein Cmp7p (CHMP7), work together to recruit additional ESCRT-III proteins to holes in the nuclear membrane. CHMP7 protein is involved in several processes, including late endosome to vacuole transport; midbody abscission; and mitotic nuclear division. It is a part of ESCRT III complex, which colocalizes with chromatin. The molecular weight of CHMP7 is 50 kDa.

## Storage

### Storage:

Store at -20°C. Avoid exposure to light. Stable for one year after shipment.

### Storage Buffer:

PBS with 50% Glycerol, 0.05% Proclin300, 0.5% BSA, pH 7.3.

Aliquoting is unnecessary for -20°C storage

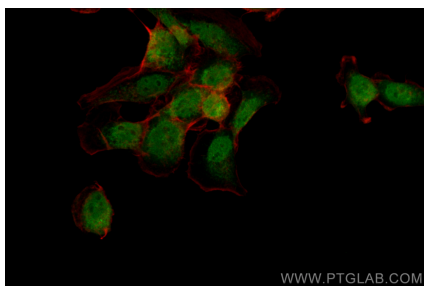
For technical support and original validation data for this product please contact:

T: 1 (888) 4PTGLAB (1-888-478-4522) (toll free  
in USA), or 1(312) 455-8498 (outside USA)

E: [proteintech@ptglab.com](mailto:proteintech@ptglab.com)  
W: [ptglab.com](http://ptglab.com)

This product is exclusively available under Proteintech Group brand and is not available to purchase from any other manufacturer.

## Selected Validation Data



Immunofluorescent analysis of (4% PFA) fixed A431 cells using CoraLite® Plus 488 CHMP7 antibody (CL488-16424) at dilution of 1:200.