

For Research Use Only

CoraLite® Plus 488-conjugated MVP/LRP Polyclonal antibody

Catalog Number: CL488-16478

Featured Product



Basic Information

Catalog Number:

CL488-16478

Size:

100ul , Concentration: 1000 ug/ml by Nanodrop;

Source:

Rabbit

Isotype:

IgG

Immunogen Catalog Number:

AG9593

GenBank Accession Number:

BC015623

GeneID (NCBI):

9961

UNIPROT ID:

Q14764

Full Name:

major vault protein

Calculated MW:

893 aa, 99 kDa

Observed MW:

99-104 kDa

Purification Method:

Antigen affinity purification

Recommended Dilutions:

IF/ICC 1:50-1:500

Excitation/Emission maxima wavelengths:

493 nm / 522 nm

Applications

Tested Applications:

IF/ICC, FC (Intra)

Species Specificity:

human, mouse, rat

Positive Controls:

IF/ICC : HepG2 cells,

Background Information

Vaults are the largest cellular ribonuclear protein complexes with a hollow barrel-like structure, and have been associated with the MDR phenotype. Major vault protein (MVP) is the main component of vaults and is presumed to be involved in MDR. MVP is identical with the human lung resistance protein (LRP), known to be overexpressed in multiple chemotherapy resistance models [PMID:23083532]. MVP has been associated to resistance to radiotherapy [4], probably due to its role in preventing apoptosis by inhibiting the COP-1/p53 axis [PMID: 12894554, 15994960].

Storage

Storage:

Store at -20°C. Avoid exposure to light. Stable for one year after shipment.

Storage Buffer:

PBS with 50% Glycerol, 0.05% Proclin300, 0.5% BSA, pH 7.3.

Aliquoting is unnecessary for -20°C storage

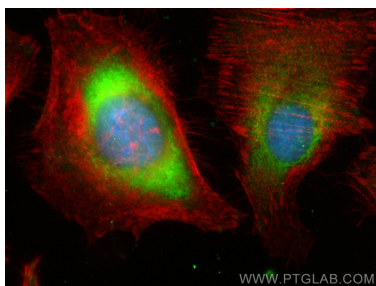
For technical support and original validation data for this product please contact:

T: 1 (888) 4PTGLAB (1-888-478-4522) (toll free in USA), or 1(312) 455-8498 (outside USA)

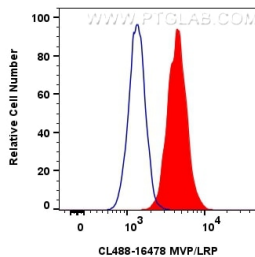
E: proteintech@ptglab.com
W: ptglab.com

This product is exclusively available under Proteintech Group brand and is not available to purchase from any other manufacturer.

Selected Validation Data



Immunofluorescent analysis of (4% PFA) fixed HepG2 cells using Coralite® Plus 488 MVP/LRP antibody (CL488-16478) at dilution of 1:200, CL594-Phalloidin (red).



1x10⁶ HepG2 cells were intracellularly stained with 0.8 ug Coralite® Plus 488 MVP/LRP Polyclonal Antibody (CL488-16478)(red), or 0.8 ug Coralite® Plus 488-conjugated Rabbit IgG control Rabbit PolyAb (CL488-30000) (blue). Cells were fixed with 4% PFA and permeabilized with Flow Cytometry Perm Buffer (PF00011-C).