

For Research Use Only

# CoraLite® Plus 488-conjugated Desmin Polyclonal antibody



Catalog Number: CL488-16520

Featured Product

1 Publications

## Basic Information

Catalog Number:

CL488-16520

Size:

100ul , Concentration: 1000 ug/ml by Nanodrop;

Source:

Rabbit

Isotype:

IgG

Immunogen Catalog Number:

AG9742

GenBank Accession Number:

BC032116

GeneID (NCBI):

1674

UNIPROT ID:

P17661

Full Name:

desmin

Calculated MW:

470 aa, 54 kDa

Observed MW:

52-53 kDa

Purification Method:

Antigen affinity purification

Recommended Dilutions:

IF-P 1:50-1:500

IF/ICC 1:50-1:500

Excitation/Emission maximum wavelengths:

493 nm / 522 nm

## Applications

Tested Applications:

IF/ICC, IF-P, FC (Intra)

Species Specificity:

human, mouse, rat

Cited Species:

mouse

Positive Controls:

IF-P : mouse heart tissue, mouse small intestine tissue, rat heart tissue

IF/ICC : C2C12 cells,

## Background Information

Desmin is the main intermediate filament protein in skeletal and cardiac muscle cells and is essential for both the structural integrity and the survival of muscle cells. As an abundant muscle-specific protein, desmin has been widely used as a marker of muscle derived tumors. Anti-desmin is also valuable in the differential diagnosis of tumors of uncertain origin.

## Notable Publications

Author	Pubmed ID	Journal	Application
Wei Chang	37643584	J Vasc Res	FC

## Storage

Storage:

Store at -20°C. Avoid exposure to light. Stable for one year after shipment.

Storage Buffer:

PBS with 50% Glycerol, 0.05% Proclin300, 0.5% BSA, pH 7.3.

Aliquoting is unnecessary for -20°C storage

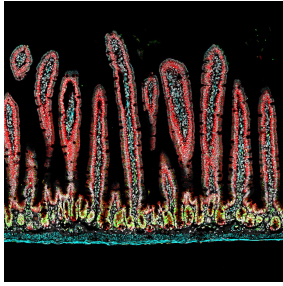
For technical support and original validation data for this product please contact:

T: 1 (888) 4PTGLAB (1-888-478-4522) (toll free in USA), or 1(312) 455-8498 (outside USA)

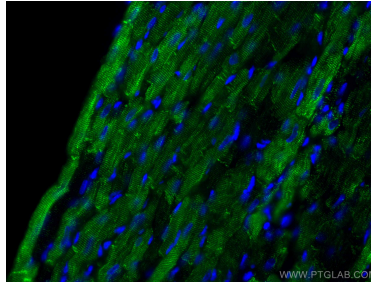
E: [proteintech@ptglab.com](mailto:proteintech@ptglab.com)  
W: [ptglab.com](http://ptglab.com)

This product is exclusively available under Proteintech Group brand and is not available to purchase from any other manufacturer.

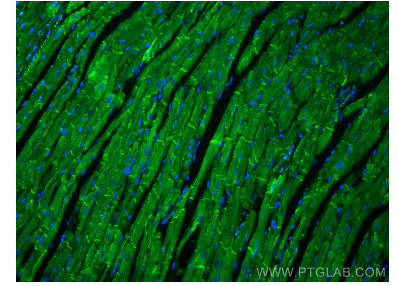
## Selected Validation Data



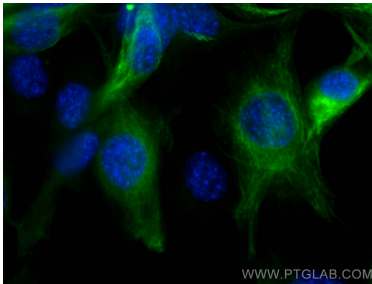
Adult mouse small intestine was co-stained with desmin (CL488-16520, in cyan), E-cadherin (20874-1-AP, in red), and PCNA (60097-1-Ig, in green). Desmin marks the stromal cells and smooth muscle, E-cadherin marks the gut epithelial cells, and PCNA marks proliferating cells. The image was created in paid partnership with @Immunofluorescence on Instagram.



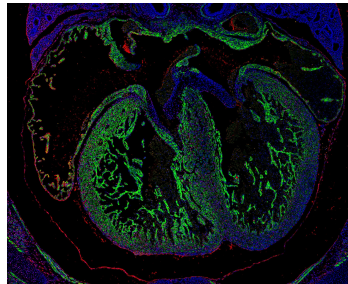
Immunofluorescent analysis of (4% PFA) fixed rat heart tissue using CoraLite® Plus 488 Desmin antibody (CL488-16520) at dilution of 1:100.



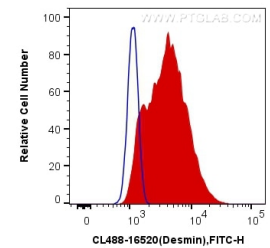
Immunofluorescent analysis of (4% PFA) fixed mouse heart tissue using CoraLite® Plus 488 Desmin antibody (CL488-16520) at dilution of 1:200.



Immunofluorescent analysis of (-20°C Methanol) fixed C2C12 cells using CoraLite® Plus 488 Desmin antibody (CL488-16520) at dilution of 1:200.



E14.5 FFPE mouse heart stained for Desmin (green, Cat. No CL488-16520) and PCNA (red, Cat. No 60097-1-Ig). Desmin was conjugated to CoraLite-488 fluorescent dye and stains cardiomyocytes (heart muscle cells). PCNA stains proliferating cells, which are numerous in the developing heart. In this image, the four chambers of the heart can be easily visualized. Image credit: @Immunofluorescence on Instagram.



1X10<sup>6</sup> C2C12 cells were intracellularly stained with 0.4 ug CoraLite® Plus 488 Anti-Human Desmin (CL488-16520) (red), or 0.4 ug Control Antibody. Cells were fixed with 4% PFA and permeabilized with Flow Cytometry Perm Buffer (PF00011-C).