

For Research Use Only

# CoraLite® Plus 488-conjugated ARPC5 Polyclonal antibody

Catalog Number: CL488-16717



## Basic Information

Catalog Number:

CL488-16717

Size:

100ul , Concentration: 1000 ug/ml by Nanodrop;

Source:

Rabbit

Isotype:

IgG

Immunogen Catalog Number:

AG10144

GenBank Accession Number:

BC057237

GeneID (NCBI):

10092

UNIPROT ID:

O15511

Full Name:

actin related protein 2/3 complex, subunit 5, 16kDa

Calculated MW:

154 aa, 17 kDa

Observed MW:

18-20 kDa

Purification Method:

Antigen affinity purification

Recommended Dilutions:

IF/ICC 1:50-1:500

Excitation/Emission maxima wavelengths:

493 nm / 522 nm

## Applications

Tested Applications:

IF/ICC

Species Specificity:

human, mouse, rat

Positive Controls:

IF/ICC : Neuro-2a cells,

## Storage

Storage:

Store at -20°C. Avoid exposure to light. Stable for one year after shipment.

Storage Buffer:

PBS with 50% Glycerol, 0.05% Proclin300, 0.5% BSA, pH 7.3.

Aliquoting is unnecessary for -20°C storage

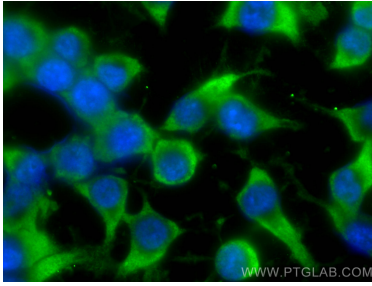
For technical support and original validation data for this product please contact:

T: 1 (888) 4PTGLAB (1-888-478-4522) (toll free in USA), or 1(312) 455-8498 (outside USA)

E: [proteintech@ptglab.com](mailto:proteintech@ptglab.com)  
W: [ptglab.com](http://ptglab.com)

This product is exclusively available under Proteintech Group brand and is not available to purchase from any other manufacturer.

## Selected Validation Data



Immunofluorescent analysis of (-20°C Ethanol)  
fixed Neuro-2a cells using CoraLite® Plus 488  
ARPC5 antibody (CL488-16717) at dilution of 1:200.