

For Research Use Only

CoraLite® Plus 488-conjugated GPT2 Polyclonal antibody

Catalog Number: CL488-16757

Featured Product



Basic Information

Catalog Number:

CL488-16757

Size:

100ul, Concentration: 1000 ug/ml by Nanodrop;

Source:

Rabbit

Isotype:

IgG

Immunogen Catalog Number:

AG10273

GenBank Accession Number:

BC062555

GeneID (NCBI):

84706

UNIPROT ID:

Q8TD30

Full Name:

glutamic pyruvate transaminase (alanine aminotransferase) 2

Calculated MW:

523 aa, 58 kDa

Observed MW:

58 kDa, 47 kDa

Purification Method:

Antigen affinity purification

Recommended Dilutions:

IF/ICC 1:50-1:500

Excitation/Emission maxima wavelengths:

493 nm / 522 nm

Applications

Tested Applications:

IF/ICC, FC (Intra)

Species Specificity:

human, mouse, rat

Positive Controls:

IF/ICC : HepG2 cells,

Background Information

GPT2 (Alanine aminotransferase 2; ALT2) is a key enzyme in intermediary metabolism, catalysing the reversible transfer of the amino group of glutamate to pyruvate, yielding alanine and ketoglutarate. GPT2 protein localizes to mitochondria, and is mainly expressed in the pancreas, brain, adrenal gland, skeletal muscle and heart. Serum GPT2 is a useful marker for liver damage. Recently mutation of GPT2 has been reported to be a cause of neural disorder (27601654). 16757-1-AP antibody recognizes two different isoforms of GPT2 protein.

Storage

Storage:

Store at -20°C. Avoid exposure to light. Stable for one year after shipment.

Storage Buffer:

PBS with 50% Glycerol, 0.05% Proclin300, 0.5% BSA, pH 7.3.

Aliquoting is unnecessary for -20°C storage

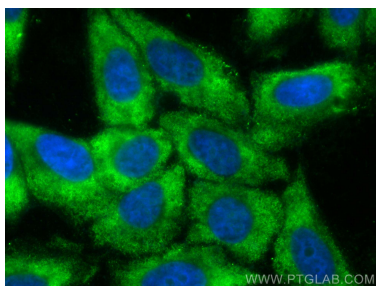
For technical support and original validation data for this product please contact:

T: 1 (888) 4PTGLAB (1-888-478-4522) (toll free in USA), or 1(312) 455-8498 (outside USA)

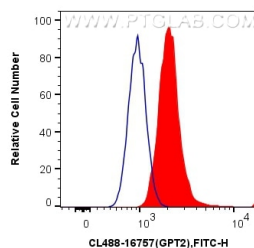
E: proteintech@ptglab.com
W: ptglab.com

This product is exclusively available under Proteintech Group brand and is not available to purchase from any other manufacturer.

Selected Validation Data



Immunofluorescent analysis of (-20°C Ethanol) fixed HepG2 cells using CoraLite® Plus 488 GPT2 antibody (CL488-16757) at dilution of 1:200.



1X10⁶ HepG2 cells were intracellularly stained with 0.4 ug CoraLite® Plus 488 Anti-Human GPT2 (CL488-16757) (red), or 0.4 ug CoraLite® Plus 488-conjugated Rabbit IgG control Rabbit PolyAb (CL488-30000, Clone:) (blue). Cells were fixed with 4% PFA and permeabilized with Flow Cytometry Perm Buffer (PF00011-C).