

For Research Use Only

CoraLite® Plus 488-conjugated MTCH2 Polyclonal antibody

Catalog Number: CL488-16888

Featured Product



Basic Information

Catalog Number:

CL488-16888

Size:

100ul , Concentration: 1000 ug/ml by Nanodrop;

Source:

Rabbit

Isotype:

IgG

Immunogen Catalog Number:

AG10399

GenBank Accession Number:

BC000875

GeneID (NCBI):

23788

UNIPROT ID:

Q9Y6C9

Full Name:

mitochondrial carrier homolog 2 (C. elegans)

Calculated MW:

303 aa, 33 kDa

Observed MW:

33 kDa

Purification Method:

Antigen affinity purification

Recommended Dilutions:

IF/ICC 1:50-1:500

Excitation/Emission maxima wavelengths:

493 nm / 522 nm

Applications

Tested Applications:

IF/ICC

Species Specificity:

human

Positive Controls:

IF/ICC : U-251 cells,

Storage

Storage:

Store at -20°C. Avoid exposure to light. Stable for one year after shipment.

Storage Buffer:

PBS with 50% Glycerol, 0.05% Proclin300, 0.5% BSA, pH 7.3.

Aliquoting is unnecessary for -20°C storage

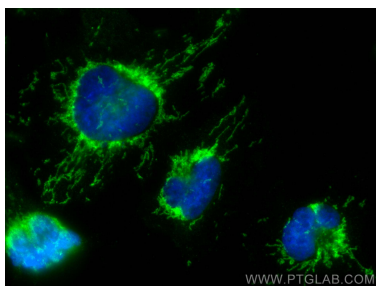
For technical support and original validation data for this product please contact:

T: 1 (888) 4PTGLAB (1-888-478-4522) (toll free in USA), or 1(312) 455-8498 (outside USA)

E: proteintech@ptglab.com
W: ptglab.com

This product is exclusively available under Proteintech Group brand and is not available to purchase from any other manufacturer.

Selected Validation Data



Immunofluorescent analysis of (4% PFA) fixed U-251 cells using CoraLite® Plus 488 MTCH2 antibody (CL488-16888) at dilution of 1:200.