

For Research Use Only

# CoraLite® Plus 488-conjugated RECQL4 Polyclonal antibody

Catalog Number: CL488-17008

Featured Product



## Basic Information

Catalog Number:

CL488-17008

Size:

100ul, Concentration: 1000 ug/ml by Nanodrop;

Source:

Rabbit

Isotype:

IgG

Immunogen Catalog Number:

AG10707

GenBank Accession Number:

BC013277

GeneID (NCBI):

9401

UNIPROT ID:

O94761

Full Name:

RecQ protein-like 4

Calculated MW:

1208 aa, 133 kDa

Observed MW:

145-150 kDa

Purification Method:

Antigen affinity purification

Recommended Dilutions:

IF/ICC 1:50-1:500

Excitation/Emission maxima wavelengths:

493 nm / 522 nm

## Applications

Tested Applications:

IF/ICC

Species Specificity:

human

Positive Controls:

IF/ICC : HeLa cells,

## Background Information

RECQ protein-like 4 (RECQL4), which has helicase domains contain 7 consensus motifs in the middle, is a gene responsible for Werner syndrome and Bloom syndrome. It forms a stable complex with UBR1 and UBR2, which has a DNA-stimulated ATPase activity. RECQL4 may involve in repairment of DNA damage by interaction with APE1 and FEN1, key participants in base excision repair. This is a rabbit polyclonal antibody raised against part of C-terminal of RECQL4 of human origin. The calculated molecular weight of RECQL4 is 133 kDa, but the modified RECQL4 protein is about 145-150 kDa.

## Storage

Storage:

Store at -20°C. Avoid exposure to light. Stable for one year after shipment.

Storage Buffer:

PBS with 50% Glycerol, 0.05% Proclin300, 0.5% BSA, pH 7.3.

Aliquoting is unnecessary for -20°C storage

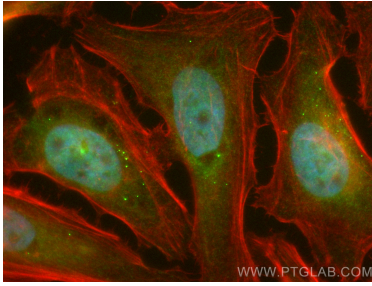
For technical support and original validation data for this product please contact:

T: 1 (888) 4PTGLAB (1-888-478-4522) (toll free in USA), or 1(312) 455-8498 (outside USA)

E: [proteintech@ptglab.com](mailto:proteintech@ptglab.com)  
W: [ptglab.com](http://ptglab.com)

This product is exclusively available under Proteintech Group brand and is not available to purchase from any other manufacturer.

## Selected Validation Data



Immunofluorescent analysis of (4% PFA) fixed HeLa cells using CoraLite® Plus 488 RECQL4 antibody (CL488-17008) at dilution of 1:200, CL594-Phalloidin (red).