

For Research Use Only

# CoraLite® Plus 488-conjugated RB1CC1 Polyclonal antibody



Catalog Number: CL488-17250

Featured Product

## Basic Information

<b>Catalog Number:</b> CL488-17250	<b>GenBank Accession Number:</b> BC017556	<b>Purification Method:</b> Antigen affinity purification
<b>Size:</b> 100ul , Concentration: 1000 µg/ml by Nanodrop;	<b>GeneID (NCBI):</b> 9821	<b>Recommended Dilutions:</b> WB 1:500-1:2000
<b>Source:</b> Rabbit	<b>Full Name:</b> RB1-inducible coiled-coil 1	<b>Excitation/Emission maxima wavelengths:</b> 493 nm / 522 nm
<b>Isotype:</b> IgG	<b>Calculated MW:</b> 1594 aa, 183 kDa	
<b>Immunogen Catalog Number:</b> AG10508	<b>Observed MW:</b> 200 kDa	

## Applications

<b>Tested Applications:</b> WB	<b>Positive Controls:</b> WB : HEK-293 cells, K-562 cells
<b>Species Specificity:</b> human, mouse, rat	

## Background Information

RB1CC1, also named as RBICC or FIP200, is implicated in the regulation of RB1 expression and functions as a DNA-binding transcription factor. It is a potent regulator of the RB1 pathway and a mediator that plays a crucial role in muscular differentiation. Its expression is, thus, a prerequisite for myogenic differentiation. Involved in autophagy. RB1CC1 is required for autophagosome formation. It is probably involved in the tumorigenesis of breast cancer. RB1CC1 is frequently mutated in breast cancer and shows characteristics of a classical tumor suppressor gene. This antibody is a rabbit polyclonal antibody raised against residues near the C terminus of human RB1CC1. the calculated molecular weight of RB1CC1 is 180 kDa, but the modified RB1CC1 is about 200 kDa.

## Storage

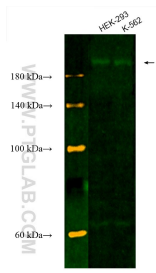
**Storage:**  
Store at -20°C. Avoid exposure to light. Stable for one year after shipment.  
**Storage Buffer:**  
PBS with 50% Glycerol, 0.05% Proclin300, 0.5% BSA, pH 7.3.  
Aliquoting is unnecessary for -20°C storage

\*\*\* 20ul sizes contain 0.1% BSA

For technical support and original validation data for this product please contact:  
T: 1 (888) 4PTGLAB (1-888-478-4522) (toll free in USA), or 1(312) 455-8498 (outside USA)  
E: proteintech@ptglab.com  
W: ptglab.com

This product is exclusively available under Proteintech Group brand and is not available to purchase from any other manufacturer.

## Selected Validation Data



Various lysates were subjected to SDS PAGE followed by western blot with CL488-17250 (RB1CC1 antibody) at dilution of 1:1000 incubated at room temperature for 1.5 hours.