

For Research Use Only

CoraLite® Plus 488-conjugated MYL7 Polyclonal antibody

Catalog Number: CL488-17283



Basic Information

Catalog Number:

CL488-17283

Size:

100ul , Concentration: 1000 ug/ml by Nanodrop;

Source:

Rabbit

Isotype:

IgG

Immunogen Catalog Number:

AG11058

GenBank Accession Number:

BC027915

GeneID (NCBI):

58498

UNIPROT ID:

Q01449

Full Name:

myosin, light chain 7, regulatory

Calculated MW:

175 aa, 19 kDa

Observed MW:

19 kDa

Purification Method:

Antigen affinity purification

Recommended Dilutions:

IF-P 1:50-1:500

Excitation/Emission maxima wavelengths:

493 nm / 522 nm

Applications

Tested Applications:

IF-P

Species Specificity:

human, mouse, rat

Positive Controls:

IF-P : mouse heart tissue,

Background Information

MYL7, also known as myosin light chain 2a (MLC2a), is essential for heart development. The expression of MYL7 in heart is predominately restricted to the atrium. So its expression has been considered as useful marker for atrial cardiomyocytes.

Storage

Storage:

Store at -20°C. Avoid exposure to light. Stable for one year after shipment.

Storage Buffer:

PBS with 50% Glycerol, 0.05% Proclin300, 0.5% BSA, pH 7.3.

Aliquoting is unnecessary for -20°C storage

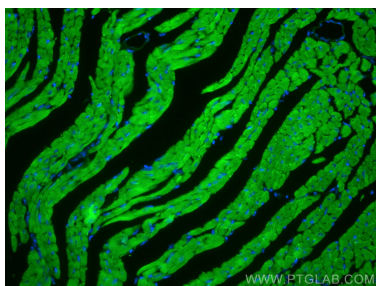
For technical support and original validation data for this product please contact:

T: 1 (888) 4PTGLAB (1-888-478-4522) (toll free in USA), or 1(312) 455-8498 (outside USA)

E: proteintech@ptglab.com
W: ptglab.com

This product is exclusively available under Proteintech Group brand and is not available to purchase from any other manufacturer.

Selected Validation Data



Immunofluorescent analysis of (4% PFA) fixed mouse heart tissue using CoraLite® Plus 488 MYL7 antibody (CL488-17283) at dilution of 1:200.