

For Research Use Only

CoraLite® Plus 488-conjugated EXD1 Polyclonal antibody

Catalog Number: CL488-17313



Basic Information

Catalog Number:

CL488-17313

Size:

100ul , Concentration: 1000 ug/ml by Nanodrop;

Source:

Rabbit

Isotype:

IgG

Immunogen Catalog Number:

AG11282

GenBank Accession Number:

BC030628

GeneID (NCBI):

161829

UNIPROT ID:

Q8NHP7

Full Name:

exonuclease 3'-5' domain containing 1

Calculated MW:

514 aa, 58 kDa

Observed MW:

36 kDa, 58 kDa, 75 kDa

Purification Method:

Antigen affinity purification

Recommended Dilutions:

IF/ICC 1:50-1:500

Excitation/Emission maxima wavelengths:

493 nm / 522 nm

Applications

Tested Applications:

IF/ICC

Species Specificity:

human

Positive Controls:

IF/ICC : HeLa cells,

Background Information

EXD1, also named as EXDL1, has three isoforms with MW 58 kDa, 36 kDa and 65 kDa. This antibody can recognize all these three isoforms.

Storage

Storage:

Store at -20°C. Avoid exposure to light. Stable for one year after shipment.

Storage Buffer:

PBS with 50% Glycerol, 0.05% Proclin300, 0.5% BSA, pH 7.3.

Aliquoting is unnecessary for -20°C storage

For technical support and original validation data for this product please contact:

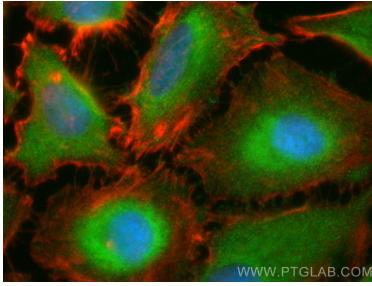
T: 1 (888) 4PTGLAB (1-888-478-4522) (toll free in USA), or 1(312) 455-8498 (outside USA)

E: proteintech@ptglab.com

W: ptglab.com

This product is exclusively available under Proteintech Group brand and is not available to purchase from any other manufacturer.

Selected Validation Data



Immunofluorescent analysis of (-20°C Ethanol) fixed HeLa cells using CoraLite® Plus 488 EXD1 antibody (CL488-17313) at dilution of 1:200, CL594-Phalloidin (red).