

For Research Use Only

CoraLite® Plus 488-conjugated Cytokeratin 20 Polyclonal antibody



Catalog Number: CL488-17329

Basic Information

Catalog Number: CL488-17329	GenBank Accession Number: BC031559	Purification Method: Antigen affinity purification
Size: 100ul , Concentration: 1000 µg/ml by Nanodrop;	GeneID (NCBI): 54474	Recommended Dilutions: IF 1:50-1:500
Source: Rabbit	Full Name: keratin 20	Excitation/Emission maxima wavelengths: 493 nm / 522 nm
Isotype: IgG	Calculated MW: 424 aa, 48 kDa	
Immunogen Catalog Number: AG11308	Observed MW: 46 kDa	

Applications

Tested Applications: IF	Positive Controls: IF : HT-29 cells,
Species Specificity: human, mouse, rat, rabbit	

Background Information

Keratins are a large family of proteins that form the intermediate filament cytoskeleton of epithelial cells, which are classified into two major sequence types. Type I keratins are a group of acidic intermediate filament proteins, including K9-K23, and the hair keratins Ha1-Ha8. Type II keratins are the basic or neutral counterparts to the acidic type I keratins, including K1-K8, and the hair keratins, Hb1-Hb6. Keratin 20 is a type I cytokeratin. It is a major cellular protein of mature enterocytes and goblet cells and is specifically found in the gastric and intestinal mucosa.

Storage

Storage:
Store at -20°C. Avoid exposure to light. Stable for one year after shipment.
Storage Buffer:
PBS with 50% Glycerol, 0.05% Proclin300, 0.5% BSA, pH 7.3.
Aliquoting is unnecessary for -20°C storage

*** 20ul sizes contain 0.1% BSA

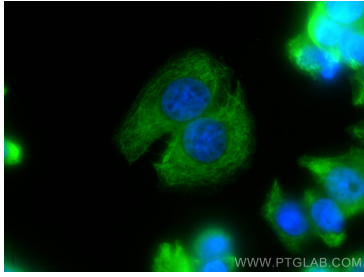
For technical support and original validation data for this product please contact:

T: 1 (888) 4PTGLAB (1-888-478-4522) (toll free
in USA), or 1(312) 455-8498 (outside USA)

E: proteintech@ptglab.com
W: ptglab.com

This product is exclusively available under Proteintech Group brand and is not available to purchase from any other manufacturer.

Selected Validation Data



Immunofluorescent analysis of (-20°C Ethanol) fixed HT-29 cells using CoraLite® Plus 488 Cytokeratin 20 antibody (CL488-17329) at dilution of 1:200.