

For Research Use Only

CoraLite® Plus 488-conjugated RPL26 Polyclonal antibody

Catalog Number: CL488-17619

Featured Product



Basic Information

Catalog Number:

CL488-17619

Size:

100ul , Concentration: 1000 ug/ml by Nanodrop;

Source:

Rabbit

Isotype:

IgG

Immunogen Catalog Number:

AG11821

GenBank Accession Number:

BC071664

GeneID (NCBI):

6154

UNIPROT ID:

P61254

Full Name:

ribosomal protein L26

Calculated MW:

145 aa, 17 kDa

Observed MW:

17-22 kDa

Purification Method:

Antigen affinity purification

Recommended Dilutions:

IF/ICC 1:50-1:500

Excitation/Emission maxima wavelengths:

493 nm / 522 nm

Applications

Tested Applications:

IF/ICC

Species Specificity:

human

Positive Controls:

IF/ICC : HeLa cells,

Storage

Storage:

Store at -20°C. Avoid exposure to light. Stable for one year after shipment.

Storage Buffer:

PBS with 50% Glycerol, 0.05% Proclin300, 0.5% BSA, pH 7.3.

Aliquoting is unnecessary for -20°C storage

For technical support and original validation data for this product please contact:

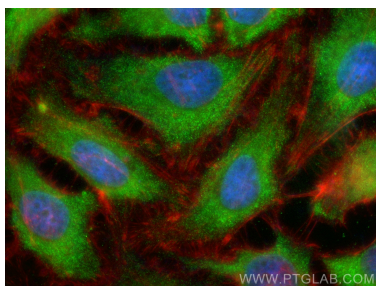
T: 1 (888) 4PTGLAB (1-888-478-4522) (toll free in USA), or 1(312) 455-8498 (outside USA)

E: proteintech@ptglab.com

W: ptglab.com

This product is exclusively available under Proteintech Group brand and is not available to purchase from any other manufacturer.

Selected Validation Data



Immunofluorescent analysis of (-20°C Ethanol) fixed HeLa cells using CoraLite® Plus 488 RPL26 antibody (CL488-17619) at dilution of 1:200, CL594-Phalloidin (red).