

For Research Use Only

CoraLite® Plus 488-conjugated CSK Polyclonal antibody

Catalog Number:CL488-17720



Basic Information

Catalog Number:

CL488-17720

Size:

100ul , Concentration: 1000 ug/ml by Nanodrop;

Source:

Rabbit

Isotype:

IgG

Immunogen Catalog Number:

AG12103

GenBank Accession Number:

BC106073

GeneID (NCBI):

1445

UNIPROT ID:

P41240

Full Name:

c-src tyrosine kinase

Calculated MW:

450 aa, 50 kDa

Observed MW:

50 kDa

Purification Method:

Antigen affinity purification

Recommended Dilutions:

IF/ICC 1:50-1:500

Excitation/Emission maxima wavelengths:

493 nm / 522 nm

Applications

Tested Applications:

IF/ICC, FC (Intra)

Species Specificity:

human, rat

Positive Controls:

IF/ICC : A431 cells,

Background Information

CSK(Tyrosine-protein kinase CSK) is also named as C-Src kinase, protein-tyrosine kinase CYL and belongs to the protein kinase superfamily. Csk is a non-receptor tyrosine kinase with a molecular mass of 50 kDa. It contains the SH3 and SH2 domains in its N-terminus and a kinase domain in its C-terminus. It negatively regulates the kinase activity of SFKs and plays an important role in physiological functions via signaling pathways for cell proliferation, differentiation, adhesion, and migration(PMID:23548896). Csk may play a role in tumor suppression by inhibiting the oncogenic activity of SFKs. Indeed, overexpression of Csk can inhibit tumor growth of human colon cancer cells(PMID:23139636). This protein can be autophosphorylated(PMID:11181701).

Storage

Storage:

Store at -20°C. Avoid exposure to light. Stable for one year after shipment.

Storage Buffer:

PBS with 50% Glycerol, 0.05% Proclin300, 0.5% BSA, pH 7.3.

Aliquoting is unnecessary for -20°C storage

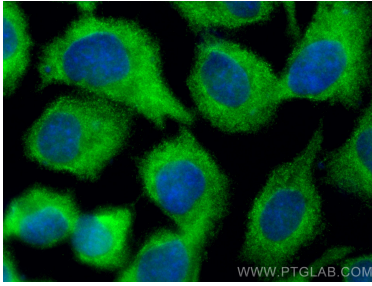
For technical support and original validation data for this product please contact:

T: 1 (888) 4PTGLAB (1-888-478-4522) (toll free in USA), or 1(312) 455-8498 (outside USA)

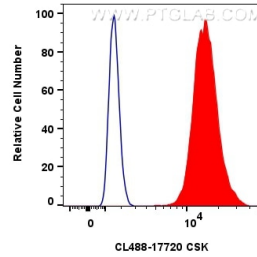
E: proteintech@ptglab.com
W: ptglab.com

This product is exclusively available under Proteintech Group brand and is not available to purchase from any other manufacturer.

Selected Validation Data



Immunofluorescent analysis of (-20°C Methanol) fixed A431 cells using Coralite® Plus 488 CSK antibody (CL488-17720) at dilution of 1:200.



1x10⁶ A431 cells were intracellularly stained with 0.8 ug Coralite® Plus 488 CSK Polyclonal Antibody (CL488-17720)(red), or 0.8 ug Coralite® Plus 488-conjugated Rabbit IgG control Rabbit PolyAb (CL488-30000) (blue). Cells were fixed with 4% PFA and permeabilized with Flow Cytometry Perm Buffer (PF00011-C).