

For Research Use Only

CoraLite® Plus 488-conjugated CORO1A Polyclonal antibody

Catalog Number: CL488-17760



Basic Information

Catalog Number:

CL488-17760

Size:

100ul , Concentration: 1000 ug/ml by
Nanodrop;

Source:

Rabbit

Isotype:

IgG

Immunogen Catalog Number:

AG12139

GenBank Accession Number:

BC110374

GeneID (NCBI):

11151

UNIPROT ID:

P31146

Full Name:

coronin, actin binding protein, 1A

Calculated MW:

461 aa, 51 kDa

Observed MW:

57 kDa

Purification Method:

Antigen affinity purification

Recommended Dilutions:

IF-P 1:50-1:500

Excitation/Emission maxima wavelengths:

493 nm / 522 nm

Applications

Tested Applications:

IF-P, FC (Intra)

Species Specificity:

human, mouse, rat

Positive Controls:

IF-P : human colon tissue, mouse spleen tissue

Storage

Storage:

Store at -20°C. Avoid exposure to light. Stable for one year after shipment.

Storage Buffer:

PBS with 50% Glycerol, 0.05% Proclin300, 0.5% BSA, pH 7.3.

Aliquoting is unnecessary for -20°C storage

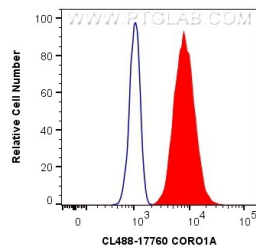
For technical support and original validation data for this product please contact:

T: 1 (888) 4PTGLAB (1-888-478-4522) (toll free
in USA), or 1(312) 455-8498 (outside USA)

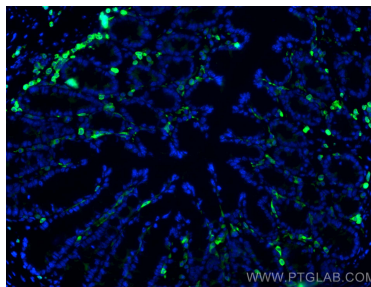
E: proteintech@ptglab.com
W: ptglab.com

This product is exclusively available under Proteintech
Group brand and is not available to purchase from any
other manufacturer.

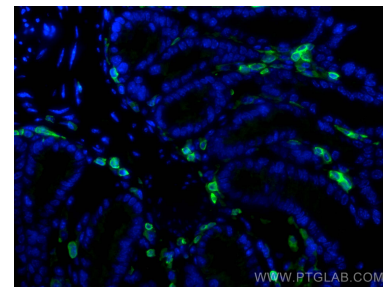
Selected Validation Data



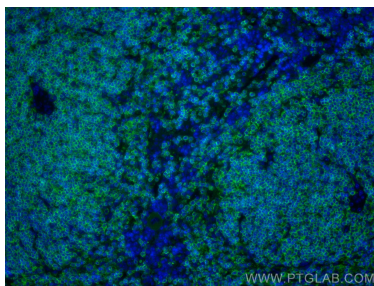
1X10⁶ Jurkat cells were intracellularly stained with 0.4 ug CoraLite® Plus 488 Anti-Human CORO1A (CL488-17760) (red), or 0.4 ug Isotype Control. Cells were fixed with 4% PFA and permeabilized with Flow Cytometry Perm Buffer (PF00011-C).



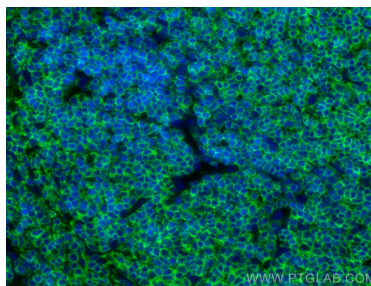
Immunofluorescent analysis of (4% PFA) fixed human colon tissue using CoraLite® Plus 488 CORO1A antibody (CL488-17760) at dilution of 1:200.



Immunofluorescent analysis of (4% PFA) fixed human colon tissue using CoraLite® Plus 488 CORO1A antibody (CL488-17760) at dilution of 1:200.



Immunofluorescent analysis of (4% PFA) fixed mouse spleen tissue using CoraLite® Plus 488 CORO1A antibody (CL488-17760) at dilution of 1:200.



Immunofluorescent analysis of (4% PFA) fixed mouse spleen tissue using CoraLite® Plus 488 CORO1A antibody (CL488-17760) at dilution of 1:200.