

For Research Use Only

CoraLite® Plus 488-conjugated INPP5E Polyclonal antibody



Catalog Number: CL488-17797

Featured Product

Basic Information

Catalog Number: CL488-17797	GenBank Accession Number: BC028032	Purification Method: Antigen affinity purification
Size: 100ul , Concentration: 1000 µg/ml by Nanodrop;	GeneID (NCBI): 56623	Recommended Dilutions: IF 1:50-1:500
Source: Rabbit	Full Name: inositol polyphosphate-5- phosphatase, 72 kDa	Excitation/Emission maxima wavelengths: 493 nm / 522 nm
Isotype: IgG	Calculated MW: 644 aa, 70 kDa	
Immunogen Catalog Number: AG11959	Observed MW: 64-66 kDa	

Applications

Tested Applications: IF	Positive Controls: IF : hTERT-RPE1 cells,
Species Specificity: human, rat, mouse	

Background Information

INPP5E(72 kDa inositol polyphosphate 5-phosphatase) converts phosphatidylinositol 3,4,5-trisphosphate (PtdIns 3,4,5-P3) to PtdIns-P2. In mouse, highest protein expression was in brain, heart, and testis, with lower expression in thymus and lung, and very little expression in kidney, spleen, and liver(PMID:10764818). Defects in INPP5E are the cause of Joubert syndrome type 1 (JBTS1) and mental retardation-truncal obesity-retinal dystrophy-micropenis (MORMS)(PMID:19668215). It has 2 isoforms with the molecular mass of 66 kDa and 70 kDa.

Storage

Storage:
Store at -20°C. Avoid exposure to light. Stable for one year after shipment.
Storage Buffer:
PBS with 50% Glycerol, 0.05% Proclin300, 0.5% BSA, pH 7.3.
Aliquoting is unnecessary for -20°C storage

*** 20ul sizes contain 0.1% BSA

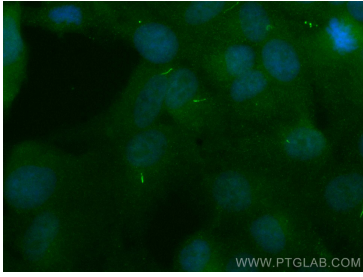
For technical support and original validation data for this product please contact:

T: 1 (888) 4PTGLAB (1-888-478-4522) (toll free
in USA), or 1(312) 455-8498 (outside USA)

E: proteintech@ptglab.com
W: ptglab.com

This product is exclusively available under Proteintech Group brand and is not available to purchase from any other manufacturer.

Selected Validation Data



Immunofluorescent analysis of (4% PFA) fixed hTERT-RPE1 cells using CoraLite® Plus 488 INPP5E antibody (CL488-17797) at dilution of 1:200.