

For Research Use Only

# CoraLite® Plus 488-conjugated Cannabinoid receptor 1 Polyclonal antibody



Catalog Number: **CL488-17978**

## Basic Information

<b>Catalog Number:</b> CL488-17978	<b>GenBank Accession Number:</b> BC074812	<b>Purification Method:</b> Antigen affinity purification
<b>Size:</b> 100ul , Concentration: 1000 µg/ml by Nanodrop;	<b>GeneID (NCBI):</b> 1268	<b>Recommended Dilutions:</b> IF 1:50-1:500
<b>Source:</b> Rabbit	<b>UNIPROT ID:</b> P21554	<b>Excitation/Emission maxima wavelengths:</b> 493 nm / 522 nm
<b>Isotype:</b> IgG	<b>Full Name:</b> cannabinoid receptor 1 (brain)	
<b>Immunogen Catalog Number:</b> AG12371	<b>Calculated MW:</b> 472 aa, 53 kDa	
	<b>Observed MW:</b> 45 kDa, 66 kDa	

## Applications

**Tested Applications:**  
IF, FC (Intra)

**Species Specificity:**  
human, mouse, rat

**Positive Controls:**

IF : mouse brain tissue,

## Background Information

Cannabinoid receptor 1 (CNR1, or CB1) and CNR2 (CB2) are members of the guanine-nucleotide-binding protein (G-protein) coupled receptor family. The CB1 receptor is expressed mainly in the brain. The CB2 receptor is expressed mainly in the immune system and in hematopoietic cells. The two receptors have been found to be involved in the cannabinoid-induced CNS effects (including alterations in mood and cognition) experienced by users of marijuana.

## Storage

**Storage:**

Store at -20°C. Avoid exposure to light. Stable for one year after shipment.

**Storage Buffer:**

PBS with 50% Glycerol, 0.05% Proclin300, 0.5% BSA, pH 7.3.

Aliquoting is unnecessary for -20°C storage

\*\*\* 20ul sizes contain 0.1% BSA

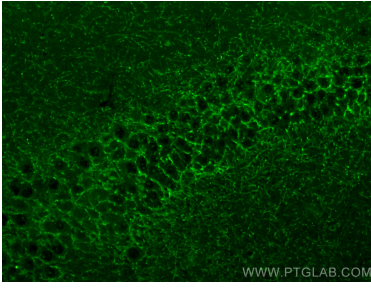
For technical support and original validation data for this product please contact:

T: 1 (888) 4PTGLAB (1-888-478-4522) (toll free  
in USA), or 1(312) 455-8498 (outside USA)

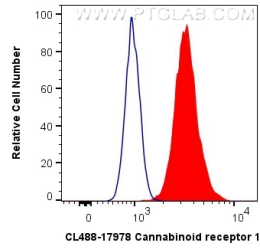
E: [proteintech@ptglab.com](mailto:proteintech@ptglab.com)  
W: [ptglab.com](http://ptglab.com)

This product is exclusively available under Proteintech Group brand and is not available to purchase from any other manufacturer.

## Selected Validation Data



Immunofluorescent analysis of (4% PFA) fixed paraffin-embedded mouse brain tissue using CoraLite® Plus 488 Cannabinoid receptor 1 antibody (CL488-17978) at dilution of 1:200. Heat mediated antigen retrieval with Tris-EDTA buffer (pH 9.0).



1X10<sup>6</sup> SH-SY5Y cells were intracellularly stained with 0.4 ug CoraLite® Plus 488 Anti-Human Cannabinoid receptor 1 (CL488-17978) (red), or 0.4 ug Isotype Control. Cells were fixed with 4% PFA and permeabilized with Flow Cytometry Perm Buffer (PF00011-C).