

For Research Use Only

# CoraLite® Plus 488-conjugated PDH E1 Alpha Polyclonal antibody

Catalog Number: CL488-18068

Featured Product



## Basic Information

### Catalog Number:

CL488-18068

### Size:

100ul , Concentration: 1000 ug/ml by Nanodrop;

### Source:

Rabbit

### Isotype:

IgG

### Immunogen Catalog Number:

AG12701

### GenBank Accession Number:

BC002406

### GeneID (NCBI):

5160

### UNIPROT ID:

P08559

### Full Name:

pyruvate dehydrogenase (lipoamide) alpha 1

### Calculated MW:

43 kDa

### Observed MW:

39-48 kDa

### Purification Method:

Antigen affinity purification

### Recommended Dilutions:

IF/ICC 1:50-1:500

### Excitation/Emission maxima wavelengths:

493 nm / 522 nm

## Applications

### Tested Applications:

IF/ICC

### Species Specificity:

human, mouse, rat

### Positive Controls:

IF/ICC : HepG2 cells,

## Background Information

PDHA1(Pyruvate dehydrogenase E1 component subunit alpha, somatic form, mitochondrial) is also named as PHE1A.It is one of the 3 enzymes of the pyruvate dehydrogenase complex which is a nuclear-encoded mitochondrial matrix multienzyme complex that provides the primary link between glycolysis and the tricarboxylic acid (TCA) cycle by catalyzing the irreversible conversion of pyruvate into acetyl-CoA(PMID:7853374).It has 4 isoforms produced by alternative splicing with the molecular mass of 39-48 kDa. Defects in PDHA1 are a cause of pyruvate dehydrogenase E1-alpha deficiency (PDHAD) and X-linked Leigh syndrome (X-LS).

## Storage

### Storage:

Store at -20°C. Avoid exposure to light. Stable for one year after shipment.

### Storage Buffer:

PBS with 50% Glycerol, 0.05% Proclin300, 0.5% BSA, pH 7.3.

Aliquoting is unnecessary for -20°C storage

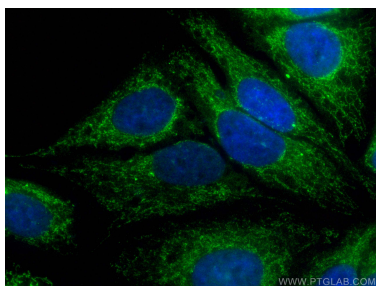
For technical support and original validation data for this product please contact:

T: 1 (888) 4PTGLAB (1-888-478-4522) (toll free in USA), or 1(312) 455-8498 (outside USA)

E: [proteintech@ptglab.com](mailto:proteintech@ptglab.com)  
W: [ptglab.com](http://ptglab.com)

This product is exclusively available under Proteintech Group brand and is not available to purchase from any other manufacturer.

## Selected Validation Data



Immunofluorescent analysis of (4% PFA) fixed  
HepG2 cells using Coralite® Plus 488 PDH E1  
Alpha antibody (CL488-18068) at dilution of 1:200.