

For Research Use Only

CoraLite® Plus 488-conjugated PHLDA1 Polyclonal antibody

Catalog Number: CL488-18263

Featured Product



Basic Information

Catalog Number:

CL488-18263

Size:

100ul , Concentration: 1000 ug/ml by
Nanodrop;

Source:

Rabbit

Isotype:

IgG

Immunogen Catalog Number:

AG13125

GenBank Accession Number:

BC018929

GeneID (NCBI):

22822

UNIPROT ID:

Q8WV24

Full Name:

pleckstrin homology-like domain,
family A, member 1

Calculated MW:

45 kDa

Observed MW:

40-45 kDa

Purification Method:

Antigen affinity purification

Recommended Dilutions:

IF/ICC 1:50-1:500

Excitation/Emission maxima wavelengths:

493 nm / 522 nm

Applications

Tested Applications:

IF/ICC

Species Specificity:

human, mouse

Positive Controls:

IF/ICC : A375 cells,

Storage

Storage:

Store at -20°C. Avoid exposure to light. Stable for one year after shipment.

Storage Buffer:

PBS with 50% Glycerol, 0.05% Proclin300, 0.5% BSA, pH 7.3.

Aliquoting is unnecessary for -20°C storage

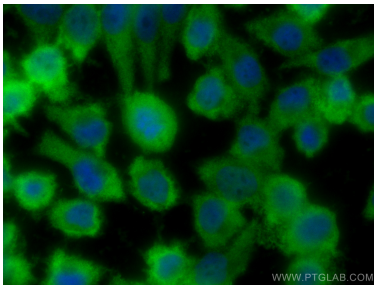
For technical support and original validation data for this product please contact:

T: 1 (888) 4PTGLAB (1-888-478-4522) (toll free
in USA), or 1(312) 455-8498 (outside USA)

E: proteintech@ptglab.com
W: ptglab.com

This product is exclusively available under Proteintech
Group brand and is not available to purchase from any
other manufacturer.

Selected Validation Data



Immunofluorescent analysis of (-20°C Ethanol) fixed A375 cells using CoraLite® Plus 488 PHLDA1 antibody (CL488-18263) at dilution of 1:200.