

For Research Use Only

CoraLite® Plus 488-conjugated ATP6V0D1 Polyclonal antibody

Catalog Number: CL488-18274

Featured Product



Basic Information

Catalog Number:

CL488-18274

Size:

100ul , Concentration: 1000 ug/ml by Nanodrop;

Source:

Rabbit

Isotype:

IgG

Immunogen Catalog Number:

AG13002

GenBank Accession Number:

BC008861

GeneID (NCBI):

9114

UNIPROT ID:

P61421

Full Name:

ATPase, H⁺ transporting, lysosomal 38kDa, VO subunit d1

Calculated MW:

351 aa, 40 kDa

Observed MW:

37-41 kDa

Purification Method:

Antigen affinity purification

Recommended Dilutions:

IF/ICC 1:50-1:500

Excitation/Emission maxima wavelengths:

493 nm / 522 nm

Applications

Tested Applications:

IF/ICC

Species Specificity:

human, mouse, rat

Positive Controls:

IF/ICC : HeLa cells,

Background Information

ATP6V0D1(V-type proton ATPase subunit d 1) is also named as ATP6D, VPATPD and belongs to the V-ATPase V0D/AC39 subunit family. It is responsible for acidifying a variety of intracellular compartments in eukaryotic cells, thus providing most of the energy required for transport processes in the vacuolar system.

Storage

Storage:

Store at -20°C. Avoid exposure to light. Stable for one year after shipment.

Storage Buffer:

PBS with 50% Glycerol, 0.05% Proclin300, 0.5% BSA, pH 7.3.

Aliquoting is unnecessary for -20°C storage

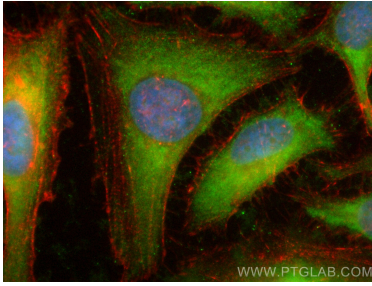
For technical support and original validation data for this product please contact:

T: 1 (888) 4PTGLAB (1-888-478-4522) (toll free in USA), or 1(312) 455-8498 (outside USA)

E: proteintech@ptglab.com
W: ptglab.com

This product is exclusively available under Proteintech Group brand and is not available to purchase from any other manufacturer.

Selected Validation Data



Immunofluorescent analysis of (-20°C Ethanol)
fixed HeLa cells using CoraLite® Plus 488
ATP6V0D1 antibody (CL488-18274) at dilution of
1:200, CL594-Phalloidin (red).