

For Research Use Only

# CoraLite® Plus 488-conjugated RBM16 Polyclonal antibody

Catalog Number: CL488-18893



## Basic Information

### Catalog Number:

CL488-18893

### Size:

100ul, Concentration: 1000 ug/ml by Nanodrop;

### Source:

Rabbit

### Isotype:

IgG

### Immunogen Catalog Number:

AG13499

### GenBank Accession Number:

BC070071

### GeneID (NCBI):

22828

### UNIPROT ID:

Q9UPN6

### Full Name:

RNA binding motif protein 16

### Calculated MW:

1271 aa, 141 kDa

### Observed MW:

170 kDa

### Purification Method:

Antigen affinity purification

### Recommended Dilutions:

IF/ICC 1:50-1:500

### Excitation/Emission maxima wavelengths:

493 nm / 522 nm

## Applications

### Tested Applications:

IF/ICC, FC (Intra)

### Species Specificity:

human, mouse

### Positive Controls:

IF/ICC : HeLa cells,

## Background Information

RBM16, also named as SCAF8, CCAP7, KIAA1116, is a 1271 amino acid protein, which interacts with POLR2A. RBM16 may play a role in mRNA processing. Immunoblot analysis of the total rat liver nuclear and nuclear matrix protein fractions revealed a single band with an apparent molecular mass of 170 kDa. While the apparent molecular mass is slightly larger than the 140 kDa predicted from the cDNA sequence, we note that the protein is rich in proline residues (10%) and therefore may display aberrant mobility in SDS gel electrophoresis. (PMID: 9528809)

## Storage

### Storage:

Store at -20°C. Avoid exposure to light. Stable for one year after shipment.

### Storage Buffer:

PBS with 50% Glycerol, 0.05% Proclin300, 0.5% BSA, pH 7.3.

Aliquoting is unnecessary for -20°C storage

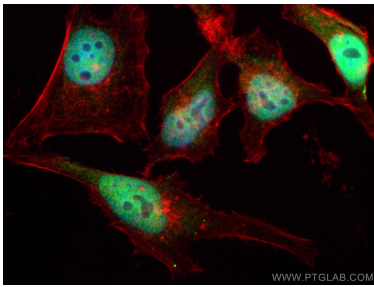
For technical support and original validation data for this product please contact:

T: 1 (888) 4PTGLAB (1-888-478-4522) (toll free in USA), or 1(312) 455-8498 (outside USA)

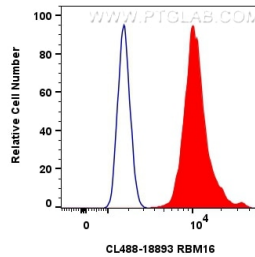
E: [proteintech@ptglab.com](mailto:proteintech@ptglab.com)  
W: [ptglab.com](http://ptglab.com)

This product is exclusively available under Proteintech Group brand and is not available to purchase from any other manufacturer.

## Selected Validation Data



Immunofluorescent analysis of (4% PFA) fixed HeLa cells using CoraLite® Plus 488 RBM16 antibody (CL488-18893) at dilution of 1:200, CL594-Phalloidin (red).



1x10<sup>6</sup> HeLa cells were intracellularly stained with 0.8 ug CoraLite® Plus 488-conjugated RBM16 Polyclonal antibody (CL488-18893)(red), or 0.8 ug CoraLite® Plus 488-conjugated Rabbit IgG control Rabbit PolyAb (CL488-30000) (blue). Cells were fixed and permeabilized with Transcription Factor Staining Buffer Kit (PF00011).