

For Research Use Only

# CoraLite® Plus 488-conjugated GLI2-Specific Polyclonal antibody

Catalog Number: CL488-18989

Featured Product



## Basic Information

Catalog Number:

CL488-18989

Size:

100ul , Concentration: 1000 ug/ml by Nanodrop;

Source:

Rabbit

Isotype:

IgG

GenBank Accession Number:

NM\_005270

GeneID (NCBI):

2736

UNIPROT ID:

Q0VGT2

Full Name:

GLI family zinc finger 2

Calculated MW:

168 kDa

Observed MW:

167 kDa 88 kDa

Purification Method:

Antigen affinity purification

Excitation/Emission maxima wavelengths:

493 nm / 522 nm

## Applications

Tested Applications:

FC (Intra)

Species Specificity:

human, mouse, rat

## Background Information

GLI2, also named as THP, belongs to the GLI C2H2-type zinc-finger protein family. GLI2 play a role during embryogenesis. It binds to the DNA sequence 5'-GAACCACCA-3' which is part of the TRE-2S regulatory element that augments the Tax-dependent enhancer of human T-cell leukemia virus type 1. It is implicated in the transduction of SHH signal. Mutation of GLI2 will cause of holoprosencephaly type 9 (HPE9). Four possible isoforms (hGli2a, b, g, and d) are formed by combinations of two independent alternative splicings, and all the isoforms could bind to a DNA motif, TRE2S. hGli2 a, b, g, and d. These isoforms encode 133-, 131-, 88-, and 86-kDa proteins, respectively.

## Storage

Storage:

Store at -20°C. Avoid exposure to light. Stable for one year after shipment.

Storage Buffer:

PBS with 50% Glycerol, 0.05% Proclin300, 0.5% BSA, pH 7.3.

Aliquoting is unnecessary for -20°C storage

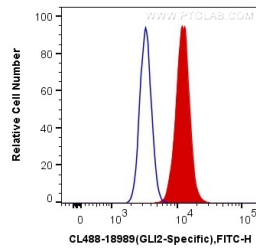
For technical support and original validation data for this product please contact:

T: 1 (888) 4PTGLAB (1-888-478-4522) (toll free in USA), or 1(312) 455-8498 (outside USA)

E: [proteintech@ptglab.com](mailto:proteintech@ptglab.com)  
W: [ptglab.com](http://ptglab.com)

This product is exclusively available under Proteintech Group brand and is not available to purchase from any other manufacturer.

## Selected Validation Data



1X10<sup>6</sup> HepG2 cells were intracellularly stained with 0.4 ug CoraLite® Plus 488 Anti-Mouse GLI2-Specific (CL488-18989) (red), or 0.4 ug Control Antibody. Cells were fixed and permeabilized with Transcription Factor Staining Buffer Kit (PF00011).