

For Research Use Only

CoraLite® Plus 488-conjugated GOLPH3 Polyclonal antibody

Catalog Number: CL488-19112

Featured Product



Basic Information

Catalog Number:

CL488-19112

Size:

100ul, Concentration: 1000 ug/ml by Nanodrop;

Source:

Rabbit

Isotype:

IgG

Immunogen Catalog Number:

AG5443

GenBank Accession Number:

BC033725

GeneID (NCBI):

64083

UNIPROT ID:

Q9H4A6

Full Name:

golgi phosphoprotein 3 (coat-protein)

Calculated MW:

298 aa, 34 kDa

Observed MW:

34 kDa

Purification Method:

Antigen affinity purification

Recommended Dilutions:

IF/ICC 1:50-1:500

Excitation/Emission maxima wavelengths:

493 nm / 522 nm

Applications

Tested Applications:

IF/ICC

Species Specificity:

human, mouse, rat

Positive Controls:

IF/ICC : HepG2 cells,

Background Information

GOLPH3 (also called GPP34, GMx33, MIDAS, or yeast Vps74p) is a 34-kDa Golgi-associated protein conserved from yeast to human. GOLPH3 binds to PtdIns(4)P-rich trans-Golgi membranes and MYO18A conveying a tensile force required for efficient tubule and vesicle formation (PMID: 19837035). GOLPH3 has been recently demonstrated as a novel oncoprotein amplified in various types of human malignancies, including melanoma, breast, non-small cell lung cancer, gliomas and connective tissue tumors (PMID:19553991; 23006319; 21499727; 22745132). Enhanced activation of mTOR signalling represents a molecular basis for the oncogenic activity of GOLPH3 (PMID: 19553991).

Storage

Storage:

Store at -20°C. Avoid exposure to light. Stable for one year after shipment.

Storage Buffer:

PBS with 50% Glycerol, 0.05% Proclin300, 0.5% BSA, pH 7.3.

Aliquoting is unnecessary for -20°C storage

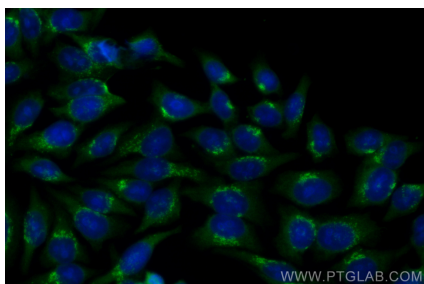
For technical support and original validation data for this product please contact:

T: 1 (888) 4PTGLAB (1-888-478-4522) (toll free in USA), or 1(312) 455-8498 (outside USA)

E: proteintech@ptglab.com
W: ptglab.com

This product is exclusively available under Proteintech Group brand and is not available to purchase from any other manufacturer.

Selected Validation Data



Immunofluorescent analysis of (-20°C Ethanol)
fixed HepG2 cells using CoraLite® Plus 488
GOLPH3 antibody (CL488-19112) at dilution of
1:200.