

For Research Use Only

CoraLite® Plus 488-conjugated CDK6 Polyclonal antibody



Catalog Number: CL488-19117

Featured Product

Basic Information

Catalog Number: CL488-19117	GenBank Accession Number: BC027989	Purification Method: Antigen affinity purification
Size: 100ul , Concentration: 1000 µg/ml by Nanodrop;	GeneID (NCBI): 1021	Excitation/Emission maxima wavelengths: 493 nm / 522 nm
Source: Rabbit	Full Name: cyclin-dependent kinase 6	
Isotype: IgG	Calculated MW: 326 aa, 36 kDa	
Immunogen Catalog Number: AG5600	Observed MW: 36-40 kDa	

Applications

Tested Applications:
FC (Intra)

Species Specificity:
human, mouse, rat

Background Information

CDK6(Cyclin-dependent kinase 6) is involved in initiation and maintenance of cell cycle exit during cell differentiation and it prevents cell proliferation and regulates negatively cell differentiation, but is required for the proliferation of specific cell types. The molecular weight of CDK6 is 36-40 kDa (PMID: 23563707, 8114739).

Storage

Storage:
Store at -20°C. Avoid exposure to light.

Storage Buffer:
PBS with 50% Glycerol, 0.05% Proclin300, 0.5% BSA, pH 7.3.

Aliquoting is unnecessary for -20°C storage

*** 20ul sizes contain 0.1% BSA

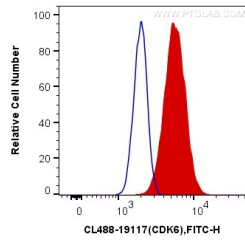
For technical support and original validation data for this product please contact:

T: 1 (888) 4PTGLAB (1-888-478-4522) (toll free
in USA), or 1(312) 455-8498 (outside USA)

E: proteintech@ptglab.com
W: ptglab.com

This product is exclusively available under Proteintech Group brand and is not available to purchase from any other manufacturer.

Selected Validation Data



1X10⁶ HeLa cells were intracellularly stained with 0.4 ug CoraLite® Plus 488 Anti-Human CDK6 (CL488-19117) (red), or 0.4 ug Control Antibody. Cells were fixed with 4% PFA and permeabilized with Flow Cytometry Perm Buffer (PF00011-C).