

For Research Use Only

CoraLite® Plus 488-conjugated Nestin Polyclonal antibody



Catalog Number: CL488-19483

Basic Information

Catalog Number: CL488-19483	GenBank Accession Number: NM_006617	Purification Method: Antigen affinity purification
Size: 100ul , Concentration: 1000 µg/ml by Nanodrop;	GeneID (NCBI): 10763	Recommended Dilutions: IF 1:50-1:500
Source: Rabbit	UNIPROT ID: P48681	Excitation/Emission maxima wavelengths: 493 nm / 522 nm
Isotype: IgG	Full Name: nestin	
	Calculated MW: 177 kDa	
	Observed MW: 170-180 kDa	

Applications

Tested Applications: IF, FC	Positive Controls: IF : human kidney tissue,
Species Specificity: human, mouse, rat	

Background Information

Nestin, also named as NES and Nbla00170, is a class VI intermediate filament protein expressed in stem cells of the central nervous system (CNS) but not in mature CNS cells. Its expression is used extensively as a marker for neural lineage cells derived from human embryonic stem (hES) and induced pluripotent stem (iPS) cells. Nestin is also expressed in non-neural stem cell populations such as pancreatic islet progenitors and hematopoietic progenitors.

Storage

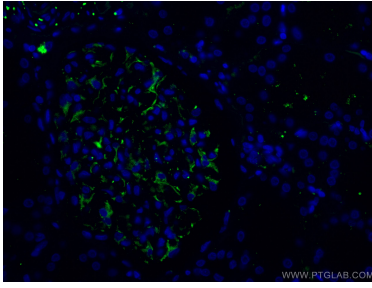
Storage:
Store at -20°C. Avoid exposure to light. Stable for one year after shipment.
Storage Buffer:
PBS with 50% Glycerol, 0.05% Proclin300, 0.5% BSA, pH 7.3.
Aliquoting is unnecessary for -20°C storage

*** 20ul sizes contain 0.1% BSA

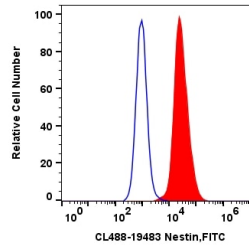
For technical support and original validation data for this product please contact:
T: 1 (888) 4PTGLAB (1-888-478-4522) (toll free in USA), or 1(312) 455-8498 (outside USA)
E: proteintech@ptglab.com
W: ptglab.com

This product is exclusively available under Proteintech Group brand and is not available to purchase from any other manufacturer.

Selected Validation Data



Immunofluorescent analysis of (4% PFA) fixed human kidney tissue using CoraLite® Plus 488 Nestin antibody (CL488-19483) at dilution of 1:200.



Neuronal cells derived from human dental pulp stem cells were fixed in 70% ethanol and blocked in 0.1% BSA in Staining Buffer, then stained with CoraLite® Plus 488-conjugated Nestin Polyclonal Antibody (CL488-19483) (1:200) (red) or unstained (blue). Image credit: @stemcell_art on Instagram