

For Research Use Only

CoraLite® Plus 488-conjugated KCC2/SLC12A5-Specific Polyclonal antibody



Catalog Number:CL488-19565

Basic Information

Catalog Number: CL488-19565	GenBank Accession Number: NM_020708	Purification Method: Antigen affinity purification
Size: 100ul , Concentration: 1000 µg/ml by Nanodrop;	GeneID (NCBI): 57468	Recommended Dilutions: IF 1:50-1:500
Source: Rabbit	Full Name: solute carrier family 12 (potassium- chloride transporter), member 5	Excitation/Emission maxima wavelengths: 493 nm / 522 nm
Isotype: IgG	Calculated MW: 126 kDa	
	Observed MW: 130-150 kDa	

Applications

Tested Applications: IF	Positive Controls: IF : mouse cerebellum tissue,
Species Specificity: human, mouse, rat	

Background Information

KCC2, encoded by SLC12A5, is a neuron-specific K⁺-Cl⁻ cotransporter that is essential for Cl⁻ homeostasis and inhibitory synaptic transmission in brain. KCC2 is expressed at high levels in neurons throughout the nervous system. KCC2 deletion caused animal death. Alterations of KCC2 have been linked to neuropathic pain, temporal lobe epilepsy, and other diseases. This antibody can detect 130-150 kDa monomer and ~250 kDa dimer of KCC2 in brain lysate. (PMID: 23401525)

Storage

Storage:
Store at -20°C. Avoid exposure to light. Stable for one year after shipment.
Storage Buffer:
PBS with 50% Glycerol, 0.05% Proclin300, 0.5% BSA, pH 7.3.
Aliquoting is unnecessary for -20°C storage

*** 20ul sizes contain 0.1% BSA

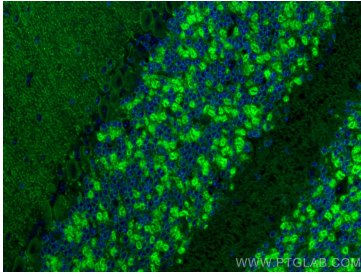
For technical support and original validation data for this product please contact:

T: 1 (888) 4PTGLAB (1-888-478-4522) (toll free
in USA), or 1(312) 455-8498 (outside USA)

E: proteintech@ptglab.com
W: ptglab.com

This product is exclusively available under Proteintech Group brand and is not available to purchase from any other manufacturer.

Selected Validation Data



Immunofluorescent analysis of (4% PFA) fixed mouse cerebellum tissue using CoraLite® Plus 488 KCC2/SLC12A5-Specific antibody (CL488-19565) at dilution of 1:200.