

For Research Use Only

CoraLite® Plus 488-conjugated MYH10-Specific Polyclonal antibody

Catalog Number:CL488-19673

Featured Product



Basic Information

Catalog Number:

CL488-19673

Size:

100ul , Concentration: 1000 ug/ml by
Nanodrop;

Source:

Rabbit

Isotype:

IgG

GenBank Accession Number:

NM_005964

GeneID (NCBI):

4628

UNIPROT ID:

P35580

Full Name:

myosin, heavy chain 10, non-muscle

Calculated MW:

231 kDa

Observed MW:

229 kDa

Purification Method:

Antigen affinity purification

Recommended Dilutions:

IF-P 1:50-1:500

Excitation/Emission maxima
wavelengths:

493 nm / 522 nm

Applications

Tested Applications:

IF-P

Species Specificity:

human, mouse, rat

Positive Controls:

IF-P : mouse cerebellum tissue,

Background Information

MYH10 is cellular myosin that appears to play a role in cytokinesis, cell shape, and specialized functions such as secretion and capping. The antibody is specific to the C-term of MYH10.

Storage

Storage:

Store at -20°C. Avoid exposure to light. Stable for one year after shipment.

Storage Buffer:

PBS with 50% Glycerol, 0.05% Proclin300, 0.5% BSA, pH 7.3.

Aliquoting is unnecessary for -20°C storage

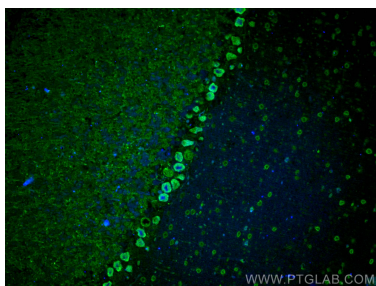
For technical support and original validation data for this product please contact:

T: 1 (888) 4PTGLAB (1-888-478-4522) (toll free
in USA), or 1(312) 455-8498 (outside USA)

E: proteintech@ptglab.com
W: ptglab.com

This product is exclusively available under Proteintech Group brand and is not available to purchase from any other manufacturer.

Selected Validation Data



Immunofluorescent analysis of (4% PFA) fixed mouse cerebellum tissue using CoraLite® Plus 488 MYH10-Specific antibody (CL488-19673) at dilution of 1:200.