

For Research Use Only

# CoraLite® Plus 488-conjugated LRP2-Specific Polyclonal antibody

Catalog Number: CL488-19700

Featured Product



## Basic Information

Catalog Number:

CL488-19700

Size:

100ul, Concentration: 1000 ug/ml by Nanodrop;

Source:

Rabbit

Isotype:

IgG

GenBank Accession Number:

NM\_004525

GeneID (NCBI):

4036

UNIPROT ID:

P98164

Full Name:

low density lipoprotein-related protein 2

Calculated MW:

522 kDa

Observed MW:

280 kDa

Purification Method:

Antigen affinity purification

Recommended Dilutions:

IF-P 1:50-1:500

Excitation/Emission maxima wavelengths:

493 nm / 522 nm

## Applications

Tested Applications:

IF-P

Species Specificity:

human

Positive Controls:

IF-P: mouse kidney tissue,

## Background Information

LRP2, also named as gp330 and Megalin, belongs to the LDLR family. It acts together with cubilin to mediate HDL endocytosis. LRP2 may participate in regulation of parathyroid-hormone and para-thyroid-hormone-related protein release. Defects in LRP2 are the cause of Donnai-Barrow syndrome (DBS). This antibody is specific to LRP2 and detects endogenous LRP2 with an apparent molecular weight 280 kDa, which is smaller than the predicted molecular weight (522 kDa) and probably represent a proteolytic fragment of the large glycoprotein (PMID: 16638803; 8483924).

## Storage

Storage:

Store at -20°C. Avoid exposure to light. Stable for one year after shipment.

Storage Buffer:

PBS with 50% Glycerol, 0.05% Proclin300, 0.5% BSA, pH 7.3.

Aliquoting is unnecessary for -20°C storage

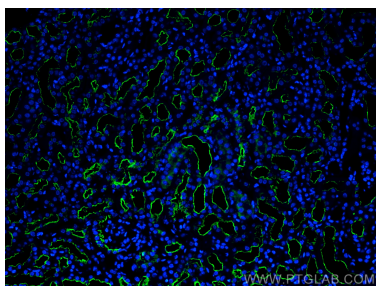
For technical support and original validation data for this product please contact:

T: 1 (888) 4PTGLAB (1-888-478-4522) (toll free in USA), or 1(312) 455-8498 (outside USA)

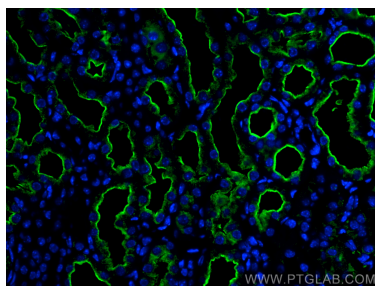
E: [proteintech@ptglab.com](mailto:proteintech@ptglab.com)  
W: [ptglab.com](http://ptglab.com)

This product is exclusively available under Proteintech Group brand and is not available to purchase from any other manufacturer.

## Selected Validation Data



Immunofluorescent analysis of (4% PFA) fixed paraffin-embedded mouse kidney tissue using CoraLite® Plus 488 LRP2-Specific antibody (CL488-19700) at dilution of 1:200. Heat mediated antigen retrieval with Tris-EDTA buffer (pH 9.0).



Immunofluorescent analysis of (4% PFA) fixed paraffin-embedded mouse kidney tissue using CoraLite® Plus 488 LRP2-Specific antibody (CL488-19700) at dilution of 1:200. Heat mediated antigen retrieval with Tris-EDTA buffer (pH 9.0).