

For Research Use Only

# CoraLite® Plus 488-conjugated CUEDC2 Polyclonal antibody

Catalog Number: CL488-20123



## Basic Information

### Catalog Number:

CL488-20123

### Size:

100ul , Concentration: 1000 ug/ml by  
Nanodrop;

### Source:

Rabbit

### Isotype:

IgG

### Immunogen Catalog Number:

AG13847

### GenBank Accession Number:

BC000262

### GeneID (NCBI):

79004

### UNIPROT ID:

Q9H467

### Full Name:

CUE domain containing 2

### Calculated MW:

287 aa, 32 kDa

### Observed MW:

32 kDa

### Purification Method:

Antigen affinity purification

### Recommended Dilutions:

IF/ICC 1:50-1:500

### Excitation/Emission maxima wavelengths:

493 nm / 522 nm

## Applications

### Tested Applications:

IF/ICC, FC (Intra)

### Species Specificity:

human, mouse

### Positive Controls:

IF/ICC : HeLa cells,

## Background Information

CUE domain-containing 2 (CUEDC2) is a ubiquitin-binding motif-containing protein involved in the regulation of the cell cycle, inflammation, and tumorigenesis. It is ubiquitously expressed in human tissues and organs, not only highly expressed in the normal brain, heart and testis, but also some kinds of cancers, such as breast, ovarian and kidney cancers. CUEDC2 could act as an adaptor protein to target I $\kappa$ B kinase (IKK) for dephosphorylation and inactivation by recruiting protein phosphatase (PP1), and thus repressed activation of the transcription factor NF- $\kappa$ B. Moreover, CUEDC2, is a key factor in endocrine resistance in breast cancer.

## Storage

### Storage:

Store at -20°C. Avoid exposure to light. Stable for one year after shipment.

### Storage Buffer:

PBS with 50% Glycerol, 0.05% Proclin300, 0.5% BSA, pH 7.3.

Aliquoting is unnecessary for -20°C storage

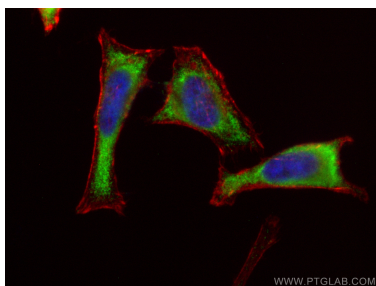
For technical support and original validation data for this product please contact:

T: 1 (888) 4PTGLAB (1-888-478-4522) (toll free  
in USA), or 1(312) 455-8498 (outside USA)

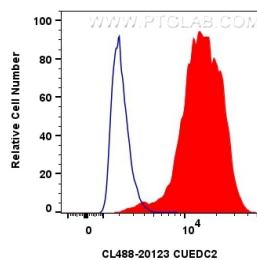
E: [proteintech@ptglab.com](mailto:proteintech@ptglab.com)  
W: [ptglab.com](http://ptglab.com)

This product is exclusively available under Proteintech Group brand and is not available to purchase from any other manufacturer.

## Selected Validation Data



Immunofluorescent analysis of (-20°C Ethanol) fixed HeLa cells using CoraLite® Plus 488 CUEDC2 antibody (CL488-20123) at dilution of 1:200, CL594-Phalloidin (red).



1x10<sup>6</sup> HeLa cells were intracellularly stained with 0.8 ug CoraLite® Plus 488-conjugated CUEDC2 Polyclonal antibody (CL488-20123)(red), or 0.8 ug CoraLite® Plus 488-conjugated Rabbit IgG control Rabbit PolyAb (CL488-30000) (blue). Cells were fixed with 4% PFA and permeabilized with Flow Cytometry Perm Buffer (PF00011-C).