

For Research Use Only

CoraLite® Plus 488-conjugated MCT1 Polyclonal antibody



Catalog Number: CL488-20139

Featured Product

Basic Information

Catalog Number: CL488-20139	GenBank Accession Number: BC026317	Purification Method: Antigen affinity purification
Size: 100ul , Concentration: 1000 µg/ml by Nanodrop;	GeneID (NCBI): 6566	Recommended Dilutions: IF 1:50-1:500
Source: Rabbit	Full Name: solute carrier family 16, member 1 (monocarboxylic acid transporter 1)	Excitation/Emission maxima wavelengths: 493 nm / 522 nm
Isotype: IgG	Calculated MW: 500 aa, 54 kDa	
Immunogen Catalog Number: AG14098	Observed MW: 38-45 kDa	

Applications

Tested Applications:

IF

Species Specificity:

human, mouse

Positive Controls:

IF : HeLa cells,

Background Information

MCT1, the SLC16A1 gene product, is a trans-membrane symporter involved in lactate and pyruvate transportation. It plays an important role in lactic acid transport and H⁺ clearance in cancer cells. MCT overexpression had been observed in various cancers and may play an important role in tumorigenesis. Two isoforms of MCT1 exist due to the alternative splicing, with predicted MW of 54 kDa and 46 kDa, respectively. While western blot analysis detected MCT1 at an apparent molecular mass of 40-50 kDa.

Storage

Storage:

Store at -20°C. Avoid exposure to light. Stable for one year after shipment.

Storage Buffer:

PBS with 50% Glycerol, 0.05% Proclin300, 0.5% BSA, pH 7.3.

Aliquoting is unnecessary for -20°C storage

*** 20ul sizes contain 0.1% BSA

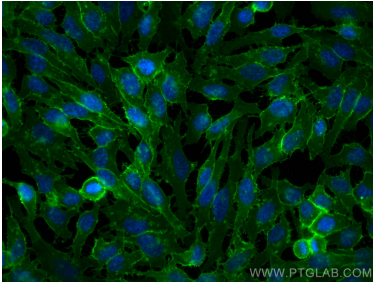
For technical support and original validation data for this product please contact:

T: 1 (888) 4PTGLAB (1-888-478-4522) (toll free
in USA), or 1(312) 455-8498 (outside USA)

E: proteintech@ptglab.com
W: ptglab.com

This product is exclusively available under Proteintech Group brand and is not available to purchase from any other manufacturer.

Selected Validation Data



Immunofluorescent analysis of (-20°C Methanol) fixed HeLa cells using CoraLite® Plus 488 MCT1 antibody (CL488-20139) at dilution of 1:200.