

For Research Use Only

CoraLite® Plus 488-conjugated IgG Lambda Light Chain Polyclonal antibody



Catalog Number: **CL488-20758**

Basic Information

Catalog Number: CL488-20758	GenBank Accession Number: BC007782	Purification Method: Antigen affinity purification
Size: 100ul , Concentration: 1000 µg/ml by Nanodrop;	GeneID (NCBI): 3537	Recommended Dilutions: IF 1:50-1:500
Source: Rabbit	Full Name: immunoglobulin lambda constant 1 (Mcg marker)	Excitation/Emission maxima wavelengths: 488 nm / 515 nm
Isotype: IgG	Calculated MW: 233 aa, 25 kDa	
Immunogen Catalog Number: AG14693	Observed MW: 25 kDa	

Applications

Tested Applications:

IF

Species Specificity:

human

Positive Controls:

IF : human tonsillitis tissue,

Background Information

This antibody detects the lambda light chain of human IgG.

Storage

Storage:

Store at -20°C. Avoid exposure to light.

Storage Buffer:

PBS with 50% Glycerol, 0.05% Proclin300, 0.5% BSA, pH 7.3.

Aliquoting is unnecessary for -20°C storage

***** 20ul sizes contain 0.1% BSA**

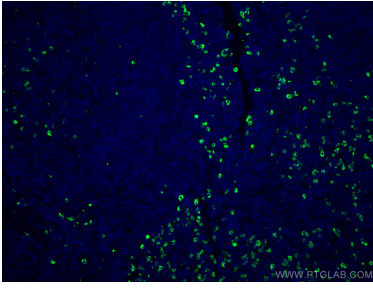
For technical support and original validation data for this product please contact:

T: 1 (888) 4PTGLAB (1-888-478-4522) (toll free
in USA), or 1(312) 455-8498 (outside USA)

E: proteintech@ptglab.com
W: ptglab.com

**This product is exclusively available under Proteintech
Group brand and is not available to purchase from any
other manufacturer.**

Selected Validation Data



Immunofluorescent analysis of (4% PFA) fixed human tonsillitis tissue using CoraLite® Plus 488 IgG Lambda Light Chain antibody (CL488-20758) at dilution of 1:200.