

For Research Use Only

CoraLite® Plus 488-conjugated PHIP Polyclonal antibody



Catalog Number: CL488-20933

Basic Information

Catalog Number: CL488-20933	GenBank Accession Number: BC008909	Purification Method: Antigen affinity purification
Size: 100ul , Concentration: 1000 µg/ml by Nanodrop;	GeneID (NCBI): 55023	Recommended Dilutions: IF 1:50-1:500
Source: Rabbit	UNIPROT ID: Q8WWQ0	Excitation/Emission maxima wavelengths: 493 nm / 522 nm
Isotype: IgG	Full Name: pleckstrin homology domain interacting protein	
Immunogen Catalog Number: AG14968	Calculated MW: 1821 aa, 207 kDa	
	Observed MW: 207 kDa	

Applications

Tested Applications: IF, FC (Intra)	Positive Controls: IF : MCF-7 cells,
Species Specificity: human, mouse	

Background Information

PHIP is a protein that binds to the insulin receptor substrate 1 protein and regulates glucose transporter translocation in skeletal muscle cells. PHIP may also regulate growth and survival of pancreatic beta cells. Elevated copy number of this gene may be associated with melanoma severity and the encoded protein may promote melanoma metastasis in human patients.

Storage

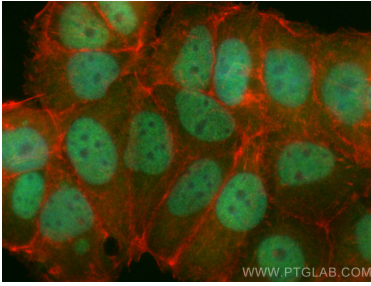
Storage:
Store at -20°C. Avoid exposure to light. Stable for one year after shipment.
Storage Buffer:
PBS with 50% Glycerol, 0.05% Proclin300, 0.5% BSA, pH 7.3.
Aliquoting is unnecessary for -20°C storage

*** 20ul sizes contain 0.1% BSA

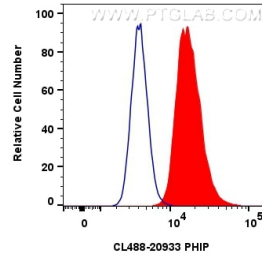
For technical support and original validation data for this product please contact:
T: 1 (888) 4PTGLAB (1-888-478-4522) (toll free in USA), or 1(312) 455-8498 (outside USA)
E: proteintech@ptglab.com
W: ptglab.com

This product is exclusively available under Proteintech Group brand and is not available to purchase from any other manufacturer.

Selected Validation Data



Immunofluorescent analysis of (4% PFA) fixed MCF-7 cells using CoraLite® Plus 488 PHIP antibody (CL488-20933) at dilution of 1:200, CL594-phalloidin (red).



1x10⁶ MCF-7 cells were intracellularly stained with 0.8 ug CoraLite® Plus 488-conjugated PHIP Polyclonal antibody (CL488-20933)(red), or 0.8 ug CoraLite® Plus 488-conjugated Rabbit IgG control Rabbit PolyAb (CL488-30000) (blue). Cells were fixed and permeabilized with Transcription Factor Staining Buffer Kit (PF00011).