

For Research Use Only

CoraLite® Plus 488-conjugated DEPDC6/Deptor Polyclonal antibody

Catalog Number: CL488-20985



Basic Information

Catalog Number:

CL488-20985

Size:

100ul , Concentration: 1000 ug/ml by
Nanodrop;

Source:

Rabbit

Isotype:

IgG

GenBank Accession Number:

NM_022783

GeneID (NCBI):

64798

UNIPROT ID:

Q8TB45

Full Name:

DEP domain containing 6

Calculated MW:

46 kDa

Observed MW:

40-45 kDa

Purification Method:

Antigen affinity purification

Recommended Dilutions:

IF/ICC 1:200-1:800

Excitation/Emission maxima wavelengths:

493 nm / 522 nm

Applications

Tested Applications:

IF/ICC

Species Specificity:

human, mouse, rat

Positive Controls:

IF/ICC : HepG2 cells,

Background Information

DEPDC6, also named as DEPTOR, was identified as a novel mTOR-interacting protein whose over-expression in certain cell types represents a new mechanism for activating PI3K/Akt signaling and promoting cell survival. It negative regulator of the mTORC1 and mTORC2 signaling pathways. DEPDC6 inhibits the kinase activity of both complexes. The antibody is specific to DEPDC6.

Storage

Storage:

Store at -20°C. Avoid exposure to light. Stable for one year after shipment.

Storage Buffer:

PBS with 50% Glycerol, 0.05% Proclin300, 0.5% BSA, pH 7.3.

Aliquoting is unnecessary for -20°C storage

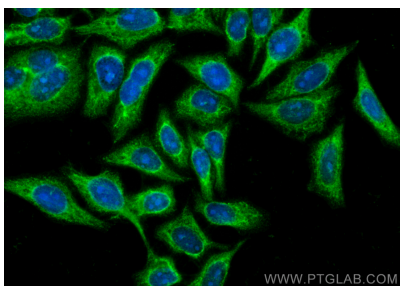
For technical support and original validation data for this product please contact:

T: 1 (888) 4PTGLAB (1-888-478-4522) (toll free
in USA), or 1(312) 455-8498 (outside USA)

E: proteintech@ptglab.com
W: ptglab.com

This product is exclusively available under Proteintech Group brand and is not available to purchase from any other manufacturer.

Selected Validation Data



Immunofluorescent analysis of (-20°C Ethanol)
fixed HepG2 cells using Coralite® Plus 488
DEPDC6/Deptor antibody (CL488-20985) at dilution
of 1:400.