

For Research Use Only

CoraLite® Plus 488-conjugated S1PR2 Polyclonal antibody



Catalog Number: CL488-21180

Featured Product

Basic Information

Catalog Number: CL488-21180	GenBank Accession Number: BC069598	Purification Method: Antigen affinity purification
Size: 100ul , Concentration: 1000 µg/ml by Nanodrop;	GeneID (NCBI): 9294	Recommended Dilutions: IF 1:50-1:500
Source: Rabbit	Full Name: sphingosine-1-phosphate receptor 2	Excitation/Emission maxima wavelengths: 488 nm / 515 nm
Isotype: IgG	Calculated MW: 353 aa, 39 kDa	
Immunogen Catalog Number: AG15470	Observed MW: 40-50 kDa	

Applications

Tested Applications:

IF

Species Specificity:

human, mouse, rat

Positive Controls:

IF : mouse brain tissue,

Background Information

S1PR2 (sphingosine-1-phosphate receptor 2), also known as S1P2 or EDG5, is one of five G-protein-coupled receptors for sphingosine-1-phosphate (S1P), a biologically active metabolic product of sphingolipid (PMID: 18787560). S1P and its receptors have important regulatory functions in normal physiology and disease processes, particularly involving the immune, central nervous, and cardiovascular systems (PMID: 21339489). S1PR2 plays a role in acute vascular inflammation (PMID: 23723450). S1PR2 signaling is implicated in STAT3 activation (PMID: 22606352).

Storage

Storage:

Store at -20°C. Avoid exposure to light.

Storage Buffer:

PBS with 50% Glycerol, 0.05% Proclin300, 0.5% BSA, pH 7.3.

Aliquoting is unnecessary for -20°C storage

*** 20ul sizes contain 0.1% BSA

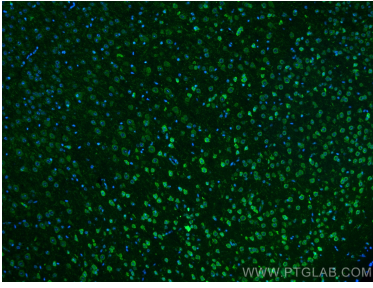
For technical support and original validation data for this product please contact:

T: 1 (888) 4PTGLAB (1-888-478-4522) (toll free
in USA), or 1(312) 455-8498 (outside USA)

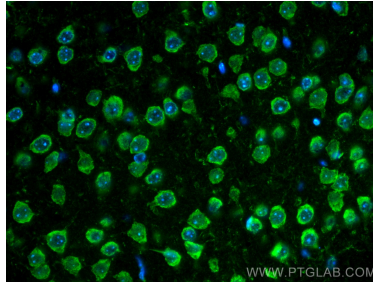
E: proteintech@ptglab.com
W: ptglab.com

This product is exclusively available under Proteintech Group brand and is not available to purchase from any other manufacturer.

Selected Validation Data



Immunofluorescent analysis of (4% PFA) fixed mouse brain tissue using CoraLite® Plus 488 S1PR2 antibody (CL488-21180) at dilution of 1:200.



Immunofluorescent analysis of (4% PFA) fixed mouse brain tissue using CoraLite® Plus 488 S1PR2 antibody (CL488-21180) at dilution of 1:200.