

For Research Use Only

CoraLite® Plus 488-conjugated ZDHHC5 Polyclonal antibody



Catalog Number: CL488-21324

Featured Product

Basic Information

Catalog Number:

CL488-21324

Size:

100ul, Concentration: 1000 µg/ml by Nanodrop;

Source:

Rabbit

Isotype:

IgG

Immunogen Catalog Number:

AG14891

GenBank Accession Number:

BC026967

GeneID (NCBI):

25921

UNIPROT ID:

Q9C0B5

Full Name:

zinc finger, DHHC-type containing 5

Calculated MW:

715 aa, 78 kDa

Observed MW:

77 kDa

Purification Method:

Antigen affinity purification

Excitation/Emission maxima wavelengths:

493 nm / 522 nm

Applications

Tested Applications:

FC (Intra)

Species Specificity:

human, mouse, rat

Background Information

The gene encoding zinc finger DHHC-type-containing (ZDHHC)5 is located in a region of chromosome 11q12.1 associated with a high rate of chromosomal translocation and variation, which has been linked to the development of various cancers. ZDHHC5 stimulates the proliferation and anchorage-dependent and -independent colony formation of non-small cell lung cancer cell lines, and was found to be required in a subset of these cells for establishment of tumor xenografts in mice. ZDHHC5 is highly expressed in a variety of embryonic cells including neural progenitor cells, but not in most adult tissues.

Storage

Storage:

Store at -20°C. Avoid exposure to light. Stable for one year after shipment.

Storage Buffer:

PBS with 50% Glycerol, 0.05% Proclin300, 0.5% BSA, pH 7.3.

Aliquoting is unnecessary for -20°C storage

*** 20ul sizes contain 0.1% BSA

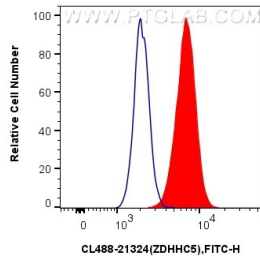
For technical support and original validation data for this product please contact:

T: 1 (888) 4PTGLAB (1-888-478-4522) (toll free in USA), or 1(312) 455-8498 (outside USA)

E: proteintech@ptglab.com
W: ptglab.com

This product is exclusively available under Proteintech Group brand and is not available to purchase from any other manufacturer.

Selected Validation Data



1×10^6 HeLa cells were intracellularly stained with 0.8 μ g CoraLite® Plus 488 Anti-Human ZDHHC5 (CL488-21324) (red), or 0.8 μ g CoraLite® Plus 488-conjugated Rabbit IgG control Rabbit PolyAb (CL488-30000, Clone:) (blue). Cells were fixed with 4% PFA and permeabilized with Flow Cytometry Perm Buffer (PF00011-C).