

For Research Use Only

# CoraLite® Plus 488-conjugated FAM114A1 Polyclonal antibody

Catalog Number: CL488-21638



## Basic Information

### Catalog Number:

CL488-21638

### Size:

100ul , Concentration: 1000 ug/ml by  
Nanodrop;

### Source:

Rabbit

### Isotype:

IgG

### Immunogen Catalog Number:

AG16287

### GenBank Accession Number:

BC040452

### GeneID (NCBI):

92689

### UNIPROT ID:

Q8IWE2

### Full Name:

family with sequence similarity 114,  
member A1

### Calculated MW:

563 aa, 61 kDa

### Observed MW:

80 kDa

### Purification Method:

Antigen affinity purification

### Recommended Dilutions:

IF/ICC 1:50-1:500

### Excitation/Emission maxima wavelengths:

493 nm / 522 nm

## Applications

### Tested Applications:

IF/ICC, FC (Intra)

### Species Specificity:

human, mouse

### Positive Controls:

IF/ICC : HepG2 cells,

## Background Information

FAM114A1, also named as Nervous system overexpressed protein 20, is a 563 amino acid protein, which belongs to the FAM114 family. FAM114A1 localizes in the cytoplasm and may play a role in neuronal cell development. The calculated molecular weight of FAM114A1 is 61 kDa, but the modified FAM114A1 may be 70-80 kDa protein.

## Storage

### Storage:

Store at -20°C. Avoid exposure to light. Stable for one year after shipment.

### Storage Buffer:

PBS with 50% Glycerol, 0.05% Proclin300, 0.5% BSA, pH 7.3.

Aliquoting is unnecessary for -20°C storage

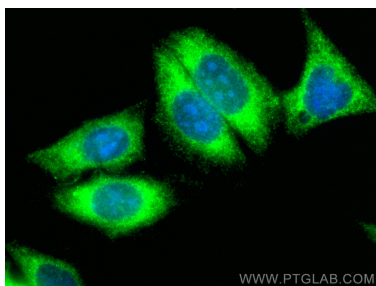
For technical support and original validation data for this product please contact:

T: 1 (888) 4PTGLAB (1-888-478-4522) (toll free  
in USA), or 1(312) 455-8498 (outside USA)

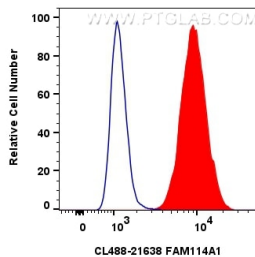
E: [proteintech@ptglab.com](mailto:proteintech@ptglab.com)  
W: [ptglab.com](http://ptglab.com)

This product is exclusively available under Proteintech  
Group brand and is not available to purchase from any  
other manufacturer.

## Selected Validation Data



Immunofluorescent analysis of (-20°C Ethanol) fixed HepG2 cells using CoraLite® Plus 488 FAM114A1 antibody (CL488-21638) at dilution of 1:200.



1x10<sup>6</sup> HepG2 cells were intracellularly stained with 0.4 ug CoraLite® Plus 488-conjugated FAM114A1 Polyclonal antibody (CL488-21638) (red), or 0.4 ug CoraLite® Plus 488-conjugated Rabbit IgG control Rabbit PolyAb (CL488-30000) (blue). Cells were fixed with 4% PFA and permeabilized with Flow Cytometry Perm Buffer (PF00011-C).