

For Research Use Only

CoraLite® Plus 488-conjugated GBX2 Polyclonal antibody

Catalog Number: CL488-21639

Featured Product



Basic Information

Catalog Number:

CL488-21639

Size:

100ul , Concentration: 1000 ug/ml by Nanodrop;

Source:

Rabbit

Isotype:

IgG

Immunogen Catalog Number:

AG16288

GenBank Accession Number:

BC137448

GeneID (NCBI):

2637

UNIPROT ID:

P52951

Full Name:

gastrulation brain homeobox 2

Calculated MW:

348 aa, 37 kDa

Observed MW:

33-37 kDa

Purification Method:

Antigen affinity purification

Recommended Dilutions:

IF/ICC 1:50-1:500

Excitation/Emission maxima wavelengths:

493 nm / 522 nm

Applications

Tested Applications:

IF/ICC

Species Specificity:

human, mouse

Positive Controls:

IF/ICC : HeLa cells,

Background Information

Homeobox protein GBX-2 (GBX-2) is a homeobox gene essential for normal development of the midbrain and the anterior hindbrain. It mainly expressed in the brain, and located in nucleoplasm. It is presumably a transcription factor that is likely to regulate the expression of genes involved in establishing early A/P pattern in the neural plate (PMID: 9247335).

Storage

Storage:

Store at -20°C. Avoid exposure to light. Stable for one year after shipment.

Storage Buffer:

PBS with 50% Glycerol, 0.05% Proclin300, 0.5% BSA, pH 7.3.

Aliquoting is unnecessary for -20°C storage

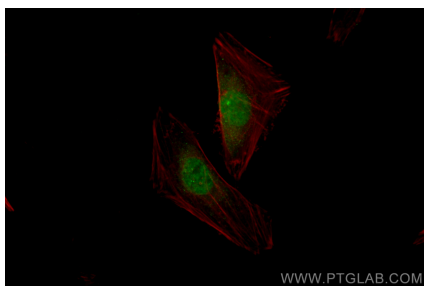
For technical support and original validation data for this product please contact:

T: 1 (888) 4PTGLAB (1-888-478-4522) (toll free in USA), or 1(312) 455-8498 (outside USA)

E: proteintech@ptglab.com
W: ptglab.com

This product is exclusively available under Proteintech Group brand and is not available to purchase from any other manufacturer.

Selected Validation Data



Immunofluorescent analysis of (4% PFA) fixed HeLa cells using Coralite® Plus 488 GBX2 antibody (CL488-21639) at dilution of 1:200.