

For Research Use Only

CoraLite® Plus 488-conjugated GLUT1 Polyclonal antibody

Catalog Number: CL488-21829

Featured Product



Basic Information

Catalog Number:

CL488-21829

Size:

100ul , Concentration: 1000 µg/ml by Nanodrop;

Source:

Rabbit

Isotype:

IgG

Immunogen Catalog Number:

AG16282

GenBank Accession Number:

BC121804

GeneID (NCBI):

6513

UNIPROT ID:

P11166

Full Name:

solute carrier family 2 (facilitated glucose transporter), member 1

Calculated MW:

492 aa, 54 kDa

Observed MW:

45-55 kDa

Purification Method:

Antigen affinity purification

Recommended Dilutions:

IF-P 1:50-1:500

Excitation/Emission maxima wavelengths:

493 nm / 522 nm

Applications

Tested Applications:

IF-P, FC (Intra)

Species Specificity:

human, mouse, rat

Positive Controls:

IF-P: mouse brain tissue,

Background Information

SLC2A1, also known as GLUT1, is an ubiquitously expressed glucose transporter and responsible for the basal level of glucose uptake in most cell types. Human erythrocytes express the highest level of the SLC2A1. Defects in SLC2A1 are the cause of GLUT1 deficiency syndrome type 1 and type 2. High expression of SLC2A1 has been reported to be a reliable immunohistochemical marker for juvenile hemangiomas. GLUT1 protein may appear as two or more distinct forms among 43 kDa to 55 kDa due to the different glycosylation state. And the conversion of highly glycosylated form of GLUT1 to less glycosylated form has been reported to correlate to differentiation (PMID: 8263524, 23302780). 21829-1-AP antibody can also detect the 25 kDa degradation protein in SDS-PAGE (PMID:18387950).

Storage

Storage:

Store at -20°C. Avoid exposure to light. Stable for one year after shipment.

Storage Buffer:

PBS with 50% Glycerol, 0.05% Proclin300, 0.5% BSA, pH 7.3.

Aliquoting is unnecessary for -20°C storage

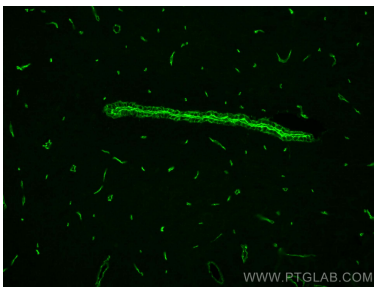
For technical support and original validation data for this product please contact:

T: 1 (888) 4PTGLAB (1-888-478-4522) (toll free in USA), or 1(312) 455-8498 (outside USA)

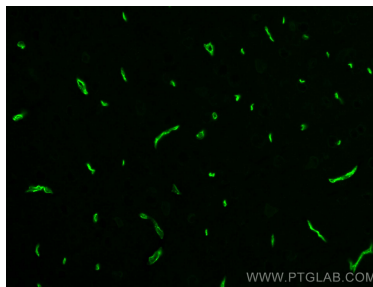
E: proteintech@ptglab.com
W: ptglab.com

This product is exclusively available under Proteintech Group brand and is not available to purchase from any other manufacturer.

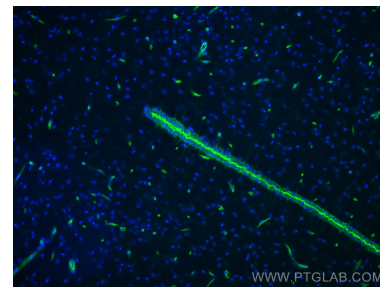
Selected Validation Data



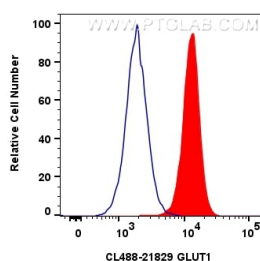
Immunofluorescent analysis of (4% PFA) fixed paraffin-embedded mouse brain tissue using CoraLite® Plus 488 GLUT1 antibody (CL488-21829) at dilution of 1:200. Heat mediated antigen retrieval with Tris-EDTA buffer (pH 9.0).



Immunofluorescent analysis of (4% PFA) fixed paraffin-embedded mouse brain tissue using CoraLite® Plus 488 GLUT1 antibody (CL488-21829) at dilution of 1:200. Heat mediated antigen retrieval with Tris-EDTA buffer (pH 9.0).



Immunofluorescent analysis of (4% PFA) fixed paraffin-embedded mouse brain tissue using CoraLite® Plus 488 GLUT1 antibody (CL488-21829) at dilution of 1:200. Heat mediated antigen retrieval with Tris-EDTA buffer (pH 9.0).



1x10⁶ Jurkat cells were intracellularly stained with 0.8 ug CoraLite® Plus 488 Anti-Human GLUT1 (CL488-21829)(red), or 0.8 ug CoraLite® Plus 488-conjugated Rabbit IgG control Rabbit PolyAb (CL488-30000) (blue). Cells were fixed with 4% PFA and permeabilized with Flow Cytometry Perm Buffer (PF00011-C).