

For Research Use Only

CoraLite® Plus 488-conjugated Sclerostin Polyclonal antibody



Catalog Number: CL488-21933

Featured Product

Basic Information

Catalog Number: CL488-21933	GenBank Accession Number: BC101086	Purification Method: Antigen affinity purification
Size: 100ul , Concentration: 1000 µg/ml by Nanodrop;	GeneID (NCBI): 50964	Recommended Dilutions: IF 1:50-1:500
Source: Rabbit	Full Name: sclerosteosis	Excitation/Emission maximum wavelengths: 493 nm / 522 nm
Isotype: IgG	Calculated MW: 213 aa, 24 kDa	
Immunogen Catalog Number: AG16567		

Applications

Tested Applications: IF	Positive Controls: IF : HepG2 cells,
Species Specificity: human	

Background Information

Sclerostin is a secreted glycoprotein with a C-terminal cysteine knot-like (CTCK) domain and sequence similarity to the DAN (differential screening-selected gene aberrative in neuroblastoma) family of bone morphogenetic protein (BMP) antagonists. Loss-of-function mutations in this gene are associated with an autosomal-recessive disorder, sclerosteosis, which causes progressive bone overgrowth. A deletion downstream of this gene, which causes reduced sclerostin expression, is associated with a milder form of the disorder called van Buchem disease

Storage

Storage:
Store at -20°C. Avoid exposure to light. Stable for one year after shipment.
Storage Buffer:
PBS with 50% Glycerol, 0.05% Proclin300, 0.5% BSA, pH 7.3.
Aliquoting is unnecessary for -20°C storage

*** 20ul sizes contain 0.1% BSA

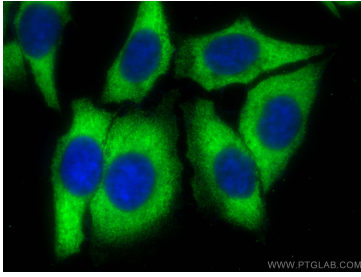
For technical support and original validation data for this product please contact:

T: 1 (888) 4PTGLAB (1-888-478-4522) (toll free in USA), or 1(312) 455-8498 (outside USA)

E: proteintech@ptglab.com
W: ptglab.com

This product is exclusively available under Proteintech Group brand and is not available to purchase from any other manufacturer.

Selected Validation Data



Immunofluorescent analysis of (-20°C Methanol) fixed HepG2 cells using CoraLite® Plus 488 Sclerostin antibody (CL488-21933) at dilution of 1:200.