

For Research Use Only

CoraLite® Plus 488-conjugated CD107a / LAMP1 Polyclonal antibody



Catalog Number: CL488-21997

Basic Information

Catalog Number: CL488-21997	GenBank Accession Number: BC021288	Purification Method: Antigen affinity purification
Size: 100ul , Concentration: 1000 µg/ml by Nanodrop;	GeneID (NCBI): 3916	Excitation/Emission maxima wavelengths: 488 nm / 515 nm
Source: Rabbit	Full Name: lysosomal-associated membrane protein 1	
Isotype: IgG	Calculated MW: 417 aa, 45 kDa	
Immunogen Catalog Number: AG17367	Observed MW: 120 kDa	

Applications

Tested Applications:
FC (Intra)

Species Specificity:
human

Background Information

LAMP1 (also known as CD107a) is a 90-120 kDa heavily glycosylated membrane protein enriched in the lysosomal membrane. LAMP1 functions to provide selectins with carbohydrate ligands. This protein has also been shown to be a marker of degranulation on lymphocytes such as CD8+ and NK cells and may also play a role in tumor cell differentiation and metastasis.

Storage

Storage:
Store at -20°C. Avoid exposure to light. Stable for one year after shipment.

Storage Buffer:
PBS with 50% Glycerol, 0.05% Proclin300, 0.5% BSA, pH 7.3.

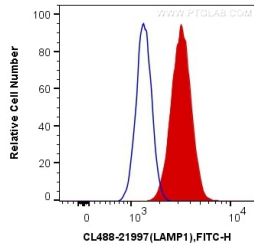
Aliquoting is unnecessary for -20°C storage

*** 20ul sizes contain 0.1% BSA

For technical support and original validation data for this product please contact:
T: 1 (888) 4PTGLAB (1-888-478-4522) (toll free in USA), or 1(312) 455-8498 (outside USA) E: proteintech@ptglab.com
W: ptglab.com

This product is exclusively available under Proteintech Group brand and is not available to purchase from any other manufacturer.

Selected Validation Data



1X10⁶ HepG2 cells were intracellularly stained with 0.4 ug CoraLite® Plus 488 Anti-Human LAMP1 (CL488-21997) (red), or 0.4 ug Control Antibody. Cells were fixed with 4% PFA and permeabilized with Flow Cytometry Perm Buffer (PF00011-C).