

For Research Use Only

CoraLite® Plus 488-conjugated CPT1B-specific Polyclonal antibody



Catalog Number: CL488-22170

Featured Product

Basic Information

Catalog Number: CL488-22170	GenBank Accession Number: BC131570	Purification Method: Antigen affinity purification
Size: 100ul , Concentration: 1000 µg/ml by Nanodrop;	GeneID (NCBI): 1375	Recommended Dilutions: IF 1:50-1:500
Source: Rabbit	Full Name: carnitine palmitoyltransferase 1B (muscle)	Excitation/Emission maxima wavelengths: 493 nm / 522 nm
IsoType: IgG	Calculated MW: 567 aa, 64 kDa	
Immunogen Catalog Number: AG17840	Observed MW: 75-85 kDa	

Applications

Tested Applications: IF	Positive Controls: IF : mouse heart tissue,
Species Specificity: human, mouse, rat	

Background Information

Carnitine palmitoyltransferases (CPTs) mediate the transport of long chain fatty acyl groups into the mitochondrial matrix to undergo β -oxidation. Type I CPT resides in the outer mitochondrial membrane. Mammalian tissues express three isoforms: CPT1A (liver), CPT1B (muscle and heart), and CPT1C (brain). Several isoforms of CPT1B exist due to the alternative splicing, with predicted MW of 88/84/79/66 kDa.

Storage

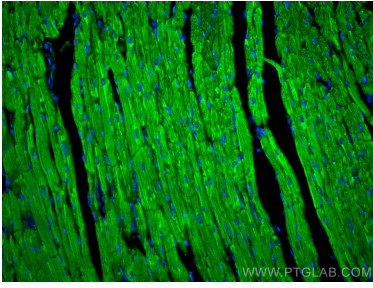
Storage:
Store at -20°C. Avoid exposure to light. Stable for one year after shipment.
Storage Buffer:
PBS with 50% Glycerol, 0.05% Proclin300, 0.5% BSA, pH 7.3.
Aliquoting is unnecessary for -20°C storage

*** 20ul sizes contain 0.1% BSA

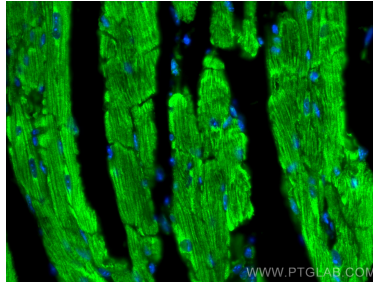
For technical support and original validation data for this product please contact:
T: 1 (888) 4PTGLAB (1-888-478-4522) (toll free in USA), or 1(312) 455-8498 (outside USA) E: proteintech@ptglab.com W: ptglab.com

This product is exclusively available under Proteintech Group brand and is not available to purchase from any other manufacturer.

Selected Validation Data



Immunofluorescent analysis of (4% PFA) fixed mouse heart tissue using CoraLite® Plus 488 CPT1B-specific antibody (CL488-22170) at dilution of 1:200.



Immunofluorescent analysis of (4% PFA) fixed mouse heart tissue using CoraLite® Plus 488 CPT1B-specific antibody (CL488-22170) at dilution of 1:200.