

For Research Use Only

CoraLite® Plus 488-conjugated CEP164 Polyclonal antibody

Catalog Number: CL488-22227

Featured Product



Basic Information

Catalog Number:

CL488-22227

Size:

100ul , Concentration: 1000 ug/ml by
Nanodrop;

Source:

Rabbit

Isotype:

IgG

Immunogen Catalog Number:

AG17570

GenBank Accession Number:

BC000602

GeneID (NCBI):

22897

UNIPROT ID:

Q9UPVO

Full Name:

centrosomal protein 164kDa

Calculated MW:

1460 aa, 164 kDa

Observed MW:

164 kDa

Purification Method:

Antigen affinity purification

Recommended Dilutions:

IF/ICC 1:50-1:500

Excitation/Emission maxima wavelengths:

493 nm / 522 nm

Applications

Tested Applications:

IF/ICC

Species Specificity:

human, canine

Positive Controls:

IF/ICC : HeLa cells,

Background Information

CEP164, also named as KIAA1052 or NPHP15, is a 1460 amino acid protein, which contains 1 WW domain. CEP164 localizes in the microtubule organizing center and is expressed in several cell lines. CEP164 plays a role in microtubule organization and/or maintenance for the formation of primary cilia, a microtubule-based structure that protrudes from the surface of epithelial cells. CEP164 plays a critical role in G2/M checkpoint and nuclear divisions. The expression of CEP164 is normally limited to the mother centriole, and CEP164 can be used as a useful marker for mother centriole.

Storage

Storage:

Store at -20°C. Avoid exposure to light. Stable for one year after shipment.

Storage Buffer:

PBS with 50% Glycerol, 0.05% Proclin300, 0.5% BSA, pH 7.3.

Aliquoting is unnecessary for -20°C storage

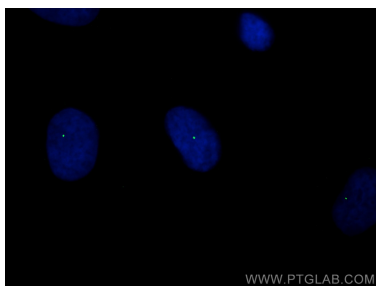
For technical support and original validation data for this product please contact:

T: 1 (888) 4PTGLAB (1-888-478-4522) (toll free
in USA), or 1(312) 455-8498 (outside USA)

E: proteintech@ptglab.com
W: ptglab.com

This product is exclusively available under Proteintech Group brand and is not available to purchase from any other manufacturer.

Selected Validation Data



Immunofluorescent analysis of (-20°C Methanol) fixed HeLa cells using CoraLite® Plus 488 CEP164 antibody (CL488-22227) at dilution of 1:200.