

For Research Use Only

CoraLite® Plus 488-conjugated REST Polyclonal antibody



Catalog Number: CL488-22242

Featured Product

Basic Information

Catalog Number: CL488-22242	GenBank Accession Number: BC132859	Purification Method: Antigen affinity purification
Size: 100ul , Concentration: 1000 µg/ml by Nanodrop;	GeneID (NCBI): 5978	Recommended Dilutions: IF 1:50-1:500
Source: Rabbit	Full Name: RE1-silencing transcription factor	Excitation/Emission maxima wavelengths: 493 nm / 522 nm
Isotype: IgG	Calculated MW: 1097 aa, 122 kDa	
Immunogen Catalog Number: AG17707	Observed MW: 200 kDa	

Applications

Tested Applications: IF	Positive Controls: IF : A549 cells,
Species Specificity: human, rat	

Background Information

REST also named as NRSF or X2 box repressor is a 1097 amino acid protein, which contains 9 C2H2-type zinc fingers. REST as transcriptional repressor binds neuron-restrictive silencer element (NRSE) and represses neuronal gene transcription in non-neuronal cells. Repressor element 1 (RE1) silencing transcription factor (REST), is widely expressed during embryogenesis, and plays a strategic role in terminal neuronal differentiation. The molecular weight of REST is 121 kDa, but REST was detected 200kDa by western blot in our result, which is similar to the one article (PMID: 16764822).

Storage

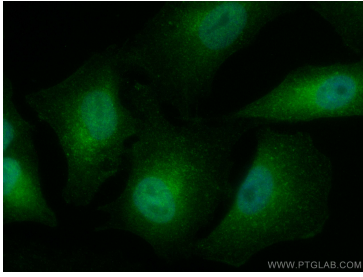
Storage:
Store at -20°C. Avoid exposure to light. Stable for one year after shipment.
Storage Buffer:
PBS with 50% Glycerol, 0.05% Proclin300, 0.5% BSA, pH 7.3.
Aliquoting is unnecessary for -20°C storage

*** 20ul sizes contain 0.1%BSA

For technical support and original validation data for this product please contact:
T: 1 (888) 4PTGLAB (1-888-478-4522) (toll free in USA), or 1(312) 455-8498 (outside USA)
E: proteintech@ptglab.com
W: ptglab.com

This product is exclusively available under Proteintech Group brand and is not available to purchase from any other manufacturer.

Selected Validation Data



Immunofluorescent analysis of (4% PFA) fixed A549 cells using Coralite® Plus 488 REST antibody (CL488-22242) at dilution of 1:200.