

For Research Use Only

CoraLite® Plus 488-conjugated Giantin Polyclonal antibody



Catalog Number: CL488-22270

Basic Information

Catalog Number: CL488-22270	GenBank Accession Number: NM_004487	Purification Method: Antigen affinity purification
Size: 100ul , Concentration: 1000 µg/ml by Nanodrop;	GeneID (NCBI): 2804	Recommended Dilutions: IF 1:50-1:500
Source: Rabbit	Full Name: golgin B1, golgi integral membrane protein	Excitation/Emission maxima wavelengths: 493 nm / 522 nm
Isotype: IgG	Calculated MW: 376 kDa	

Applications

Tested Applications: IF	Positive Controls: IF : HepG2 cells,
Species Specificity: human	

Background Information

Giantin is conserved Golgi membrane protein containing a large cytoplasmic domain. It may function to form the intercisternal cross-bridges of the Golgi complex. Anti-Giantin has been widely used to label the Golgi apparatus.

Storage

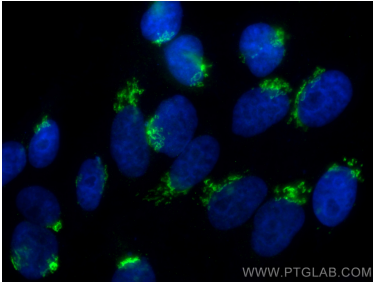
Storage:
Store at -20°C. Avoid exposure to light. Stable for one year after shipment.
Storage Buffer:
PBS with 50% Glycerol, 0.05% Proclin300, 0.5% BSA, pH 7.3.
Aliquoting is unnecessary for -20°C storage

***** 20ul sizes contain 0.1% BSA**

For technical support and original validation data for this product please contact:
T: 1 (888) 4PTGLAB (1-888-478-4522) (toll free in USA), or 1(312) 455-8498 (outside USA) E: proteintech@ptglab.com W: ptglab.com

This product is exclusively available under Proteintech Group brand and is not available to purchase from any other manufacturer.

Selected Validation Data



Immunofluorescent analysis of (4% PFA) fixed HepG2 cells using CoraLite® Plus 488 Giantin antibody (CL488-22270) at dilution of 1:200.