

For Research Use Only

CoraLite® Plus 488-conjugated AMH Polyclonal antibody



Catalog Number: **CL488-23479**

Basic Information

Catalog Number: CL488-23479	GenBank Accession Number: BC049194	Purification Method: Antigen affinity purification
Size: 100ul , Concentration: 1000 µg/ml by Nanodrop;	GeneID (NCBI): 268	Recommended Dilutions: IF 1:50-1:500
Source: Rabbit	Full Name: anti-Mullerian hormone	Excitation/Emission maxima wavelengths: 493 nm / 522 nm
Isotype: IgG	Calculated MW: 59 kDa	
Immunogen Catalog Number: AG20166		

Applications

Tested Applications: IF	Positive Controls: IF : mouse ovary tissue,
Species Specificity: human, rat, mouse	

Background Information

Anti-Müllerian hormone (AMH), also called Müllerian-inhibiting substance (MIS), is a dimeric glycoprotein and a member of the TGF- β family. AMH, produced by the Sertoli cells of the fetal testis, induces the regression of the Müllerian ducts, the anlagen of the female reproductive tract. However, after birth, this sex-dimorphic expression pattern is lost and AMH is also expressed in granulosa cells of growing follicles in the ovary. More recently, AMH has been studied for its role in ovarian folliculogenesis and as a potential marker of ovarian reserve.

Storage

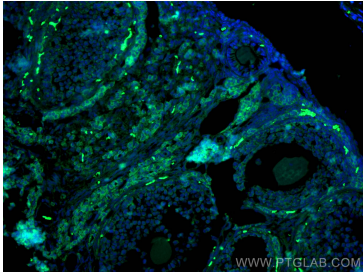
Storage:
Store at -20°C. Avoid exposure to light. Stable for one year after shipment.
Storage Buffer:
PBS with 50% Glycerol, 0.05% Proclin300, 0.5% BSA, pH 7.3.
Aliquoting is unnecessary for -20°C storage

*** 20ul sizes contain 0.1% BSA

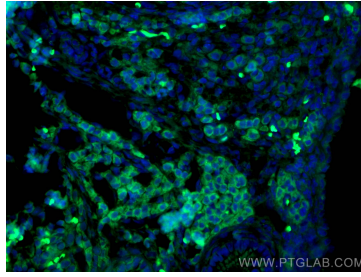
For technical support and original validation data for this product please contact:
T: 1 (888) 4PTGLAB (1-888-478-4522) (toll free in USA), or 1(312) 455-8498 (outside USA) E: proteintech@ptglab.com
W: ptglab.com

This product is exclusively available under Proteintech Group brand and is not available to purchase from any other manufacturer.

Selected Validation Data



Immunofluorescent analysis of (4% PFA) fixed mouse ovary tissue using CoraLite® Plus 488 AMH antibody (CL488-23479) at dilution of 1:200.



Immunofluorescent analysis of (4% PFA) fixed mouse ovary tissue using CoraLite® Plus 488 AMH antibody (CL488-23479) at dilution of 1:200.