

For Research Use Only

CoraLite® Plus 488-conjugated BCL3 Polyclonal antibody

Catalog Number: CL488-23959

Featured Product



Basic Information

Catalog Number:

CL488-23959

Size:

100ul , Concentration: 1000 ug/ml by Nanodrop;

Source:

Rabbit

Isotype:

IgG

Immunogen Catalog Number:

AG21040

GenBank Accession Number:

BC064993

GeneID (NCBI):

602

UNIPROT ID:

P20749

Full Name:

B-cell CLL/lymphoma 3

Calculated MW:

446 aa, 47 kDa

Observed MW:

48-60 kDa

Purification Method:

Antigen affinity purification

Recommended Dilutions:

IF/ICC 1:50-1:500

Excitation/Emission maxima wavelengths:

493 nm / 522 nm

Applications

Tested Applications:

IF/ICC

Species Specificity:

human, mouse

Positive Controls:

IF/ICC : HepG2 cells,

Background Information

BCL3 (BCL3 Transcription Coactivator), as a Protein Coding gene, has seven ankyrin repeat domains, a proline-rich N terminal domain and a serine- and proline-rich C-terminal domain(PMID: 31930327). BCL3 is an important contributor to chronic inflammatory disease states, such as osteoarthritis and rheumatoid arthritis. In the cytoplasm, BCL3 inhibits the nuclear translocation of the NF-kappa-B p50 subunit. In the nucleus, BCL3 acts as transcriptional activator that promotes transcription of NF-kappa-B target genes(Uniprot).

Storage

Storage:

Store at -20°C. Avoid exposure to light. Stable for one year after shipment.

Storage Buffer:

PBS with 50% Glycerol, 0.05% Proclin300, 0.5% BSA, pH 7.3.

Aliquoting is unnecessary for -20°C storage

For technical support and original validation data for this product please contact:

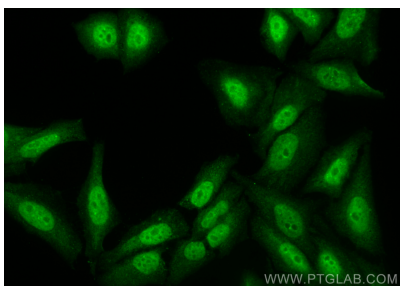
T: 1 (888) 4PTGLAB (1-888-478-4522) (toll free in USA), or 1(312) 455-8498 (outside USA)

E: proteintech@ptglab.com

W: ptglab.com

This product is exclusively available under Proteintech Group brand and is not available to purchase from any other manufacturer.

Selected Validation Data



Immunofluorescent analysis of (4% PFA) fixed HepG2 cells using CoraLite® Plus 488 BCL3 antibody (CL488-23959) at dilution of 1:200.