

For Research Use Only

CoraLite® Plus 488-conjugated NEK2 Polyclonal antibody



Catalog Number: CL488-24171

Featured Product

Basic Information

Catalog Number:

CL488-24171

Size:

100ul , Concentration: 1000 µg/ml by
Nanodrop;

Source:

Rabbit

Isotype:

IgG

Immunogen Catalog Number:

AG21476

GenBank Accession Number:

BC043502

GeneID (NCBI):

4751

UNIPROT ID:

P51955

Full Name:

NIMA (never in mitosis gene a)-
related kinase 2

Calculated MW:

52 kDa

Observed MW:

48 kDa

Purification Method:

Antigen affinity purification

Recommended Dilutions:

IF 1:200-1:800

Excitation/Emission maxima
wavelengths:

493 nm / 522 nm

Applications

Tested Applications:

IF

Species Specificity:

human, mouse

Positive Controls:

IF : HeLa cells,

Storage

Storage:

Store at -20°C. Avoid exposure to light. Stable for one year after shipment.

Storage Buffer:

PBS with 50% Glycerol, 0.05% Proclin300, 0.5% BSA, pH 7.3.

Aliquoting is unnecessary for -20°C storage

*** 20ul sizes contain 0.1% BSA

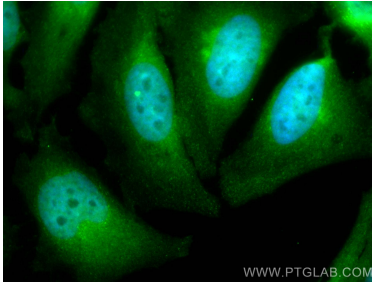
For technical support and original validation data for this product please contact:

T: 1 (888) 4PTGLAB (1-888-478-4522) (toll free
in USA), or 1(312) 455-8498 (outside USA)

E: proteintech@ptglab.com
W: ptglab.com

This product is exclusively available under Proteintech Group brand and is not available to purchase from any other manufacturer.

Selected Validation Data



Immunofluorescent analysis of (4% PFA) fixed HeLa cells using CoraLite® Plus 488 NEK2 antibody (CL488-24171) at dilution of 1:400.