

For Research Use Only

CoraLite® Plus 488-conjugated Sodium iodide symporter Polyclonal antibody

Catalog Number: CL488-24324



Basic Information

Catalog Number:

CL488-24324

Size:

100ul, Concentration: 1000 ug/ml by Nanodrop;

Source:

Rabbit

Isotype:

IgG

Immunogen Catalog Number:

AG19504

GenBank Accession Number:

BC105047

GeneID (NCBI):

6528

UNIPROT ID:

Q92911

Full Name:

solute carrier family 5 (sodium iodide symporter), member 5

Calculated MW:

643 aa, 69 kDa

Observed MW:

50-55 kDa, 75-100 kDa

Purification Method:

Antigen affinity purification

Excitation/Emission maxima wavelengths:

493 nm / 522 nm

Applications

Tested Applications:

FC (Intra)

Species Specificity:

human, mouse, rat

Background Information

The sodium iodide symporter (Na⁺/I⁻ symporter, NIS), encoded by SLC5A5, is an integral plasma membrane glycoprotein that plays an important role in iodide uptake by thyroid cells. Expression of sodium iodide symporter has also been found in extra-thyroidal tissues, including gastric mucosa, lactating mammary gland and salivary glands. Increased expression of sodium iodide symporter has been found in thyroid tissue from patients with Graves' disease as well as papillary thyroid carcinomas. In addition, sodium iodide symporter was found to express in majority of breast cancer tissue but not in normal tissue. Sodium iodide symporter can be a promising diagnostic and therapeutic tool for thyroid cancer and breast cancer. This antibody recognizes the mature approximately 75-100 kDa protein and a partially glycosylated 50-55 kDa protein. (PMID: 12588808, 9525971)

Storage

Storage:

Store at -20°C. Avoid exposure to light. Stable for one year after shipment.

Storage Buffer:

PBS with 50% Glycerol, 0.05% Proclin300, 0.5% BSA, pH 7.3.

Aliquoting is unnecessary for -20°C storage

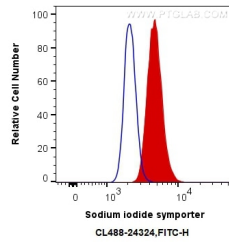
For technical support and original validation data for this product please contact:

T: 1 (888) 4PTGLAB (1-888-478-4522) (toll free in USA), or 1(312) 455-8498 (outside USA)

E: proteintech@ptglab.com
W: ptglab.com

This product is exclusively available under Proteintech Group brand and is not available to purchase from any other manufacturer.

Selected Validation Data



1X10⁶ MCF-7 cells were intracellularly stained with 0.4 ug Coralite® Plus 488 Anti-Human Sodium iodide symporter (CL488-24324) (red), or 0.4 ug Control Antibody. Cells were fixed with 4% PFA and permeabilized with Flow Cytometry Perm Buffer (PF00011-C).